



norament[®] 975 LL

Removable floor covering

nora[®]
by **Interface**[®]

Advantages of norament[®] 975 LL

Although the idea of a circular economy requires a fundamental rethink, it also offers many social, environmental and economic opportunities. As a major consumer of energy and raw materials, the construction industry is key to achieving the climate goals.

norament 975 LL is a long-lasting, resilient flooring solution that offers exceptional durability, even in high-traffic areas. The variety of colours and textures available makes it possible to match a wide range of interior aesthetics with attractive, creative designs. norament 975 LL is crafted with sustainability in mind and incorporates recycled materials, allowing you to make environmentally responsible choices.

Manufactured using premium materials, norament 975 LL ensures a reliable, premium-quality product that meets stringent quality standards. Using this floor covering will increase both the aesthetic appeal and functional performance of your space in a number of ways.



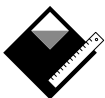
Tiles can be easily removed and reused at any time thanks to special adhesive system.



Suitable for new and renovated buildings as well as raised-access floors, temporary flooring and installation on existing old coverings.



**Quick to install: drying and waiting times are eliminated.
Can be used directly after installation.**



**Installation requires no joint welding.
Excellent dimensional stability.**



**Free from PVC, phthalate plasticisers and chlorine-containing polymers.
Produced using 8% recycled raw materials.**



**Footfall sound insulation of 8 dB.
Flame-retardant in accordance with EN 13501-1.**

Flexible use on a wide range of substrates



New & renovated substrates

norament 975 LL enables quick and easy installation on ready-to-lay substrates such as screeds or concrete.

Moreover it also allows for a quick renovation without the establishment having to be closed.

Existing old floor coverings

norament 975 LL can be laid on existing smooth old floor coverings (including rubber, lino, PVC) as well as on substrates not mentioned above (including wood, aluminium). However, it must be ensured that these are permanently bonded to the substrate and are free from cavities.



Raised-access floors

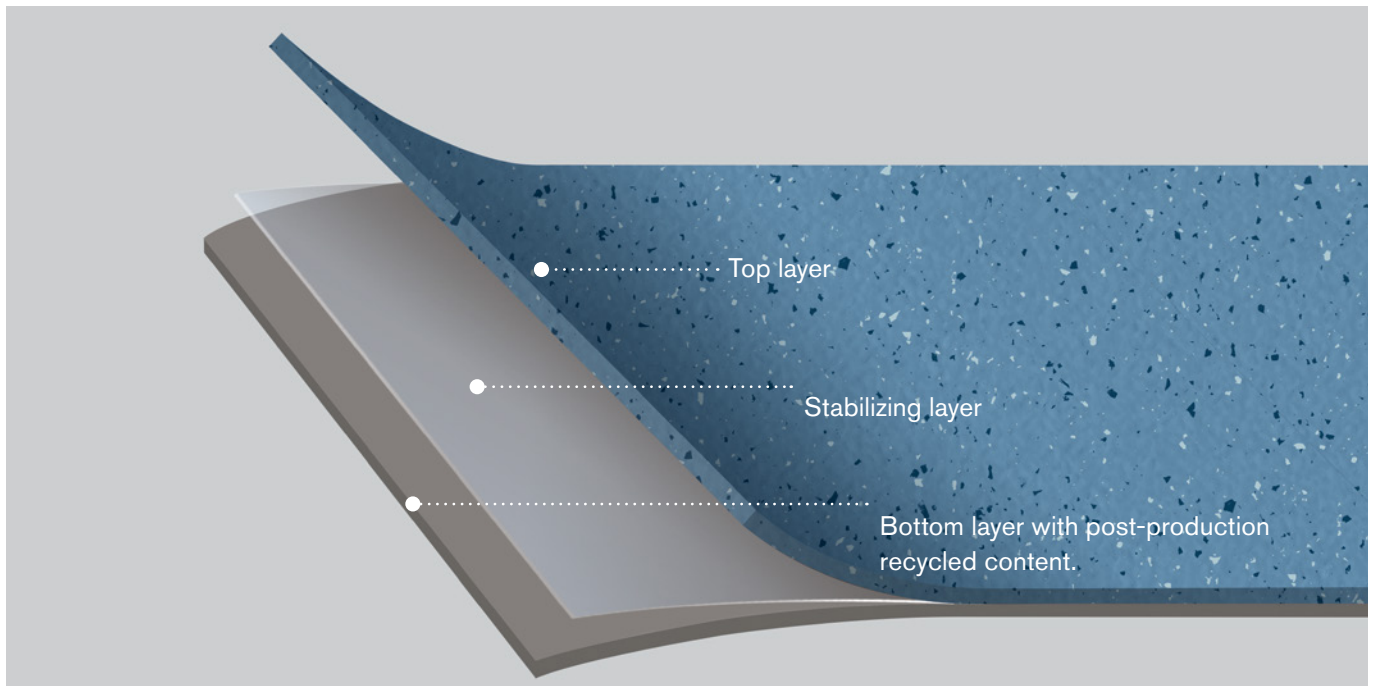
The removable tiles of norament 975 LL are suitable for raised access panels, regardless of their size. During installation they are fixed with a suitable tackifier and can be replaced at any time.

Thanks to its dense and closed rubber surface, it is easy to clean. The tiles do not need to be coated. As the application of a coating is very complicated on raised access panels (not possible to distribute liquids on it), this is a big advantage.

Product structure

The unique composition and structure of norament 975 LL affords it special properties. It comprises a top layer, a special stabilizing layer for exceptional dimensional stability, and a bottom layer, which includes recycled content.

This combination results in a robust, long-lasting flooring solution. No joint welding is required.



Notes

Loose-lay flooring may not be the best solution in certain circumstances. We will be happy to advise you if the floor in your room is subject to:

- High or regular exposure to moisture
- Frequently occurring dynamic pressure loads (e.g. from forklifts)
- High temperature fluctuations

Climate protection

Reusability

norament 975 LL can be easily removed at any time after installation without damaging the subfloor and without leaving residues on the back of the tiles. This allows considerable flexibility and hassle-free reuse of both the floor covering and subfloor when renovation work takes place.

Longevity

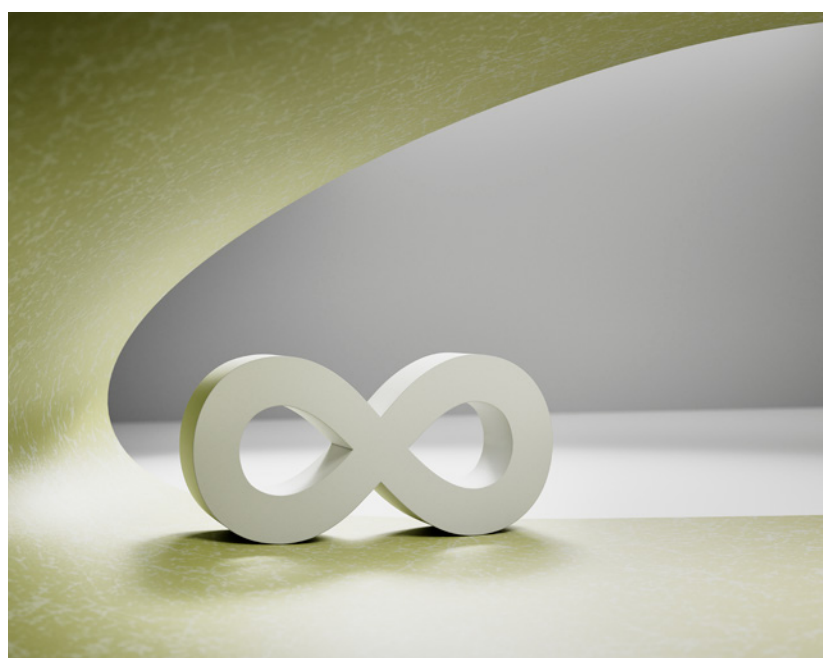
norament 975 LL has a service life of up to 40 years and can always be adjusted to new circumstances. Its exceptional durability means it can be used longer and replaced later, which saves on new purchases. It is produced using fewer raw materials and less energy, which reduces carbon emissions. The dense, coating-free, closed surface makes norament 975 LL very cost-effective to maintain over its entire service life.

Environmentally friendly and non-hazardous certification

norament 975 LL bears the German Federal Government's Blue Angel and the French Émissions dans l'air intérieur ecolabels, as well as Finnish M1 certification. These labels confirm that stringent environmental, health and performance requirements have been satisfied, including low emissions of organic substances and formaldehyde as well as the absence of phthalates and carcinogens.

Recycled content

norament 975 LL contains 8 % recycled content. Post-production recycled material in the form of sanding dust is collected in nora's production facilities and incorporated into the floor covering. Using recycled materials aligns with sustainability goals by reducing the demand for new raw materials and minimizing the environmental impact of producing the flooring.



www.blauer-engel.de/uz120



Excellent flexibility through reusability



Removing norament 975 LL from the old space

Loose-lay rubber flooring is easy to remove and reuse. It is ideal for recirculation and can be reinstalled on a different site if the building is repurposed or changes made to the aesthetic.



Preparing the new installation site

Apply a suitable tackifier on the subfloor.



Installing norament 975 LL on the new installation site

Once the tackifier has dried to the desired extent, lay and fit the tiles. Carefully rub the entire surface of the floor covering with a cork board, then roll the entire surface with a 50 kg iron roller.



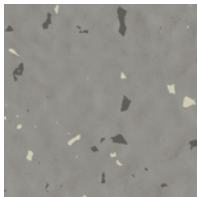
Result

The reused norament 975 LL tiles are now installed on the new site and can be used immediately.

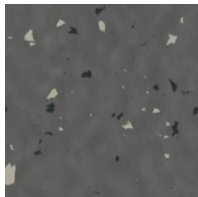
norament 975 LL

The norament 975 LL comes in a variety of colors and textures, allowing for creative design possibilities to match various interior aesthetics.

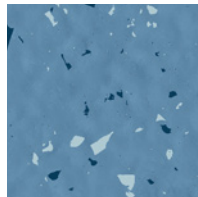
norament 975 LL · grano design Hammerblow surface



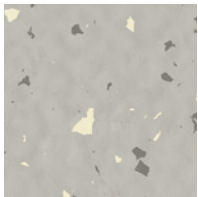
5303



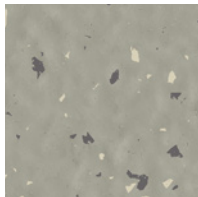
5304



5318



5302



5306



5329

norament 975 LL



Art. 975 LL/1880

□ ~1000 mm x 1000 mm



nora® profile connection dimension: E + U

Slip resistance rating R9

**Custom colours are available on request.
Please ask for minimum quantities and
delivery times.**

The differences between the design of norament 975 LL and the standard product norament 926 grano are production-related. Please request individual colour samples of the required norament product.



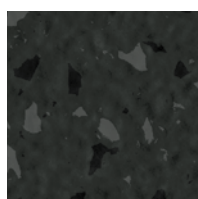
norament 975 LL · satura design
 Hammerblow surface



5110



5111



5116

norament 975 LL



Art. 975 LL/1880

□ ~1000 mm x 1000 mm



nora® profile connection dimension: E + U

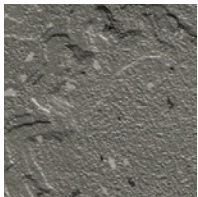
Slip resistance rating R9

**Custom colours are available on request.
 Please ask for minimum quantities and
 delivery times.**

The differences between the design of norament 975 LL and the standard product norament 926 satura are production-related. Please request individual colour samples of the required norament product.



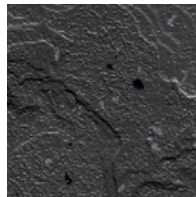
norament 975 LL · serra design
Relief structure



4930



4821



4929

norament 975 LL



Art. 975 LL/3027

□ ~1000 mm x 1000 mm



nora® profile connection dimension: E + U

Slip resistance rating R10

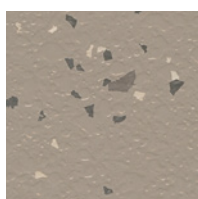
**Custom colours are available on request.
Please ask for minimum quantities and
delivery times.**



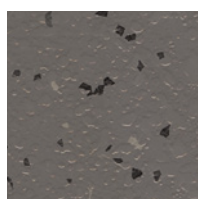
norament 975 LL · kivo inspired design
Two-tone surface



5263



5264



5265

norament 975 LL



Art. 975 LL/3208

□ ~1000 mm x 1000 mm



nora® profile connection dimension: E + U

Slip resistance rating R10

**Custom colours are available on request.
Please ask for minimum quantities and
delivery times.**



Cover picture: © nora

Specifications are subject to change without notice. Errors and omissions excepted.
No liability is assumed for the correctness, completeness or accuracy of the information. The product illustrations in this document may differ from the original.
This document does not constitute a contractual offer and serves only as non-binding information.

The nora brand and any other registered trademarks used in this document are registered to the company, the country or a company affiliated to nora systems GmbH. Any other brand names used herein are the trademarks of their respective owners.

Contact details, local offices, authorized distributors and further information can be found at www.nora.com.

Published by

nora systems GmbH
Höhnerweg 2-4
69469 Weinheim | Germany
www.nora.com