

Product Information

norament[®] 926

norament[®] 926, the one-coloured rubber flooring with the classic round pastille for extremely heavy traffic areas. **norament[®] 926** has been demonstrating its high wear-resistance for more than 40 years in areas daily subjected to very high traffic, also in transportation systems. Exposure to extreme stresses impairs neither the functionality nor its visual appearance. The floor covering is fire-resistant and free of PVC, other halogenated polymers and phthalate plasticizers.

Technical data Properties acc. to EN 12199	Test method	Requirements	Average test results from running production
Thickness	EN ISO 24346	Mean value \pm 0.20 mm of nominal value	4.0 mm
Dimensional stability	EN ISO 23999	\pm 0.4 %	\pm 0.3 %
Tear strength	ISO 34-1, method B, procedure A	Mean value \geq 20 kN/m	44 kN/m
Cigarette-burn resistance	EN 1399	Procedure A (stuffed out) \geq level 4 Procedure B (burning) \geq level 3	Fulfilled
Flexibility	EN ISO 24344, procedure A	Mandrel diameter 20 mm, no fissuring	Fulfilled
Hardness	ISO 48-4	\geq 75 Shore A	82 Shore A
Residual indentation	EN ISO 24343	Mean value \leq 0.25 mm	0.15 mm
Abrasion resistance at 5 N load	ISO 4649, procedure A	\leq 250 mm ³	115 mm ³
Colour fastness to artificial light	ISO 105-B02, procedure 3, test conditions 6.1 a)	At least level 6 on the blue scale, \geq level 3 on the grey scale	Grey scale \geq 3 acc. to ISO 105-A02

Additional technical data

Weight	EN ISO 23997		\sim 5.60 kg/m ²
Slip resistance	ISO 51130		R 9*
Improvement in footfall sound absorption	ISO 10140-3		12 dB
Effect of chemicals	EN ISO 26987		Resistant depending on concentration and time of exposure ^(A)
Electrostatic behaviour when being walked upon	EN 1815		Antistatic, charging < 2 kV

Fire behaviour / smoke behaviour

Fire behaviour	EN 13501-1		C _{fl} -s1
	EN 45545	Hazard Level	HL1*
	DIN 5510-2		SF3*
	Directive 95/28/EG / FMVSS / CMVSS 302		Fulfilled*
Fire behaviour	ASTM E-648 / ISO 9239-1		Class 1 (\geq 0.50 W/cm ²)*
Smoke density	ASTM E-662	Federal Railroad Administration	After 1.5 minutes < 100, after 4 minutes < 200*
Smoke toxicity	Bombardier SMP 800-C		Fulfilled*
	DIN 53436		Carbonisation gases are non-toxic*
	ISO 5659-2	DIN 5510-2	FED \leq 1*

Colour variations due to different production batches as well as technical alterations to improve the product have to be accepted.

* Tested and certified by an independent testing institute.

^(A) In case of increased impact of oils, greases, acids, alkalis and other aggressive chemicals please contact us.

EN 12199: Specification for homogeneous and heterogeneous profiled elastomer floor coverings

Standard article: Tiles 1004 mm x 1004 mm // article 926/354 // uni-coloured, round pastilles

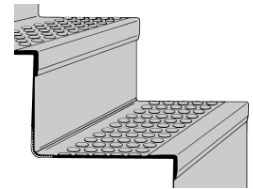
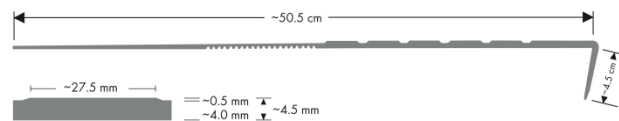
Custom-made designs and colors of **norament[®] 926** are subject to minimum order quantities.

Further product information is available in the current assortment brochure or on www.nora-transportation.com.

Stairtreads norament® 926

norament® 926 stairtread with stair nosing, riser and tread all in one piece. Due to their high wear-resistance, nora® stairtreads offer, in addition to nora® rubber floorings, practical and at the same time visually appealing solutions, e.g. for boarding areas or steps in double-decker coaches and buses.

Standard measures: Article 465 - Width: 1.285 mm
Article 466 - Width: 1.614 mm
Article 467 - Width: 2.004 mm
Tread with round pastilles



norament® stairtreads may be additionally equipped with yellow or phosphorescent signal or with yellow or grey slip resistant safety strips made of **noraplan® ultra grip** in the stair nosing.