



Global References Public Buildings

nora[®]
by **Interface**[®]

Global References Public Buildings



The Hague Airport, Rotterdam, Netherlands

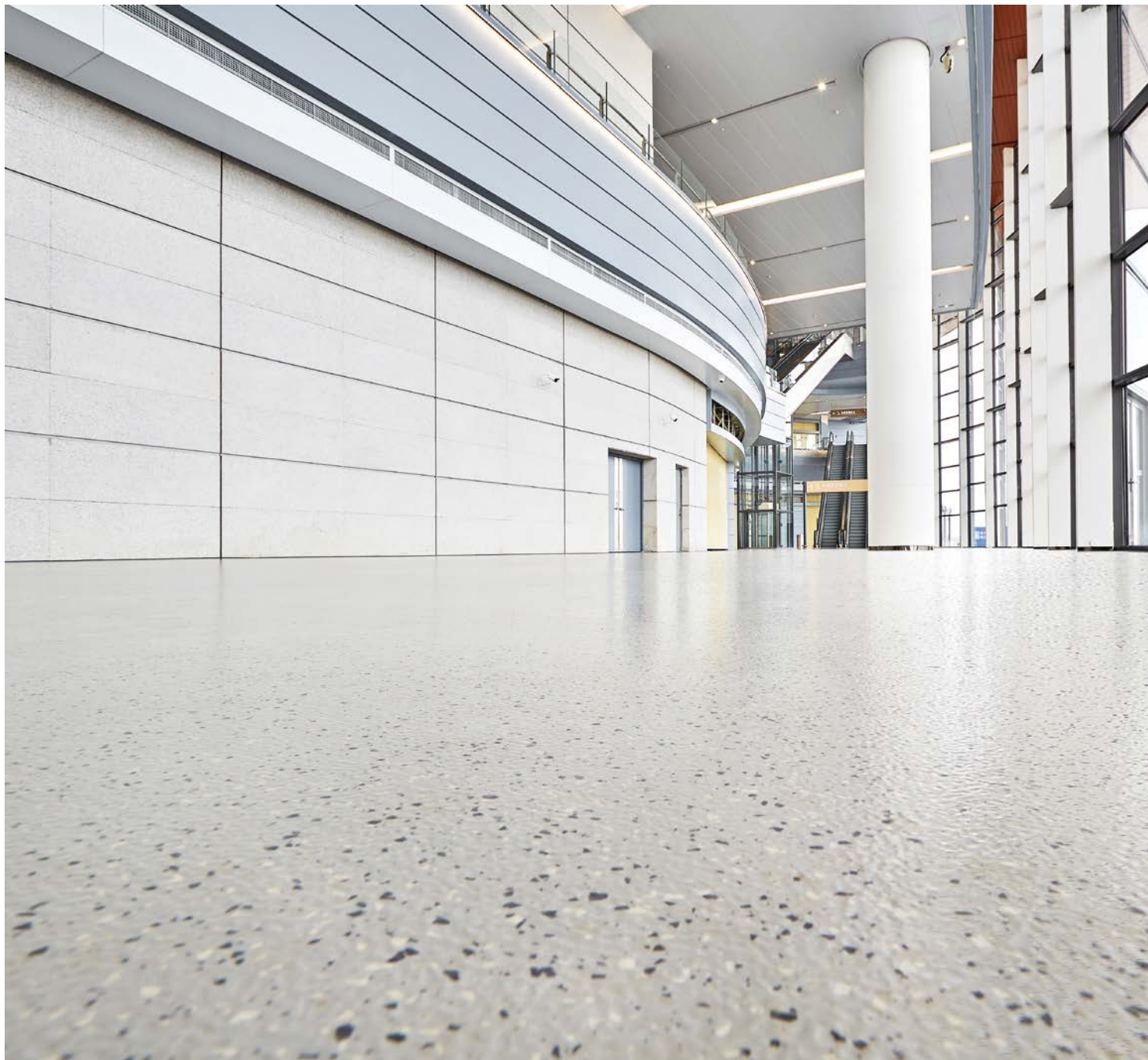
Rubber tiles for low-noise acoustics in the arrival hall

In spring 2016, the new arrival hall of The Hague Airport in Rotterdam was officially opened. The look of the flooring needed to be both modern and prestigious, as well as blending in with the rest of the airport environment. At the same time, the floor had to be able to withstand the high passenger traffic – after all, thousands of passengers and their luggage make their way through the arrival hall every day. With their appealing design and high functional performance, the rubber floor coverings from nora systems are ideally suited to all these challenges.



Object: The Hague Airport, Rotterdam, Netherlands
Architect: Noorderlicht Architecten, Delft, Netherlands
Product: norament® 926 serra, 1,200 m²
Application areas: Arrival hall
Installation: 2016
Photos: © Studio Beeldwerken





Object: Hong Kong-Zhuhai-Macao Bridge

Architect: ECADI

Product: norament 926 grano, 16,735 m²

Application areas: Entrance area, passenger area, waiting area

Installation: 2018

Photos: © nora

Hong Kong-Zhuhai-Macao Bridge, China

Part of Hong Kong's mega bridge to Macau

The world's longest sea bridge has connected the two Chinese metropolises of Hong Kong and Macau since October 2018. The mega project is 55 kilometres long and took nine years to build. Thousands of people use the world's longest sea bridge every day in their cars, driving on up to six lanes, sometimes even underground. 35 kilometres of the bridge are above water. The remaining stretch is divided between tunnels and artificial islands. nora rubber flooring was installed at the entrance, arrival and waiting areas of the tunnels. There, thanks to their dense surface, they easily cope with the high traffic volume and at the same time contribute to pleasant acoustics.





Shekou Ferry Terminal, Shenzhen, China

New ferry terminal shines with a new light

Located in Nanshan District, Shenzhen, China, the new Shekou Ferry Terminal for cruise ships was opened in 2016. It runs direct ferry connections from Shenzhen to destinations across the Pearl River delta, such as Hong Kong and Macau. So as to optimally withstand the high passenger volume, the building owners opted for durable rubber floor coverings. Because these still look good even after many years of intensive use.

Object: Shekou Ferry Terminal, Shenzhen, China
Architect: Shenzhen artmost architecture design institute
Product: noraplan® sentica, 9,822 m²
Application areas: Corridor, entrance area, passenger area
Installation: 2016
Photos: © nora





National Technical Library, Prague, Czech Republic

Literature on a colourful stage

The National Technical Library in Prague is the home to more than 1.5 million books, distributed over nine modern floors and a rounded square floor plan. Alongside pictures by the Romanian artist Dan Perjovschi, the noraplan uni rubber floor covering increases the visual drama of the space. On floors two to six, it creates a highly impressive design in blue, yellow, red, orange and green – the different colour nuances shining in the attractive open interior. A veritable sea of colours over an area of 5,000 square metres. The elaborate rubber inlays were implemented by nora systems and echo the strong geometrical lines of the ceiling and the floor.



Object: National Technical Library, Prague, Czech Republic

Architect: Projektil Architekti, Prague, Czech Republic

Product: noraplan uni, 5,000 m²

Application areas: Library hall, corridors

Installation: 2009

Photos: © Andrea Lhotakowa



University Library at Ruhr University Bochum, Germany

Classic no-nonsense design: stylish and indestructible

The library at Ruhr University Bochum was planned by German architect Bruno Lambert during the founding of the university. For the atrium and staircase, the centerpieces of the imposing functional building, the architect deliberately chose an industrial flooring that was both indestructible and, thanks to its unusual design, aesthetically striking: no-nonsense 926. The rubber flooring was – like the still relatively young architectural style itself – a new product, and its unusual design perfectly complemented the building concept. Even today, over 40 years later, the flooring with its characteristic round pastilles covers about 1,500 square meters of the library's floor.

Object: University Library at Ruhr University Bochum, Germany

Architect: Bruno Lambert, Ratingen, Germany

Product: norament 926, 1,500 m²

Application areas: Library hall, corridors

Installation: 1973

Photos: © Andreas Braun



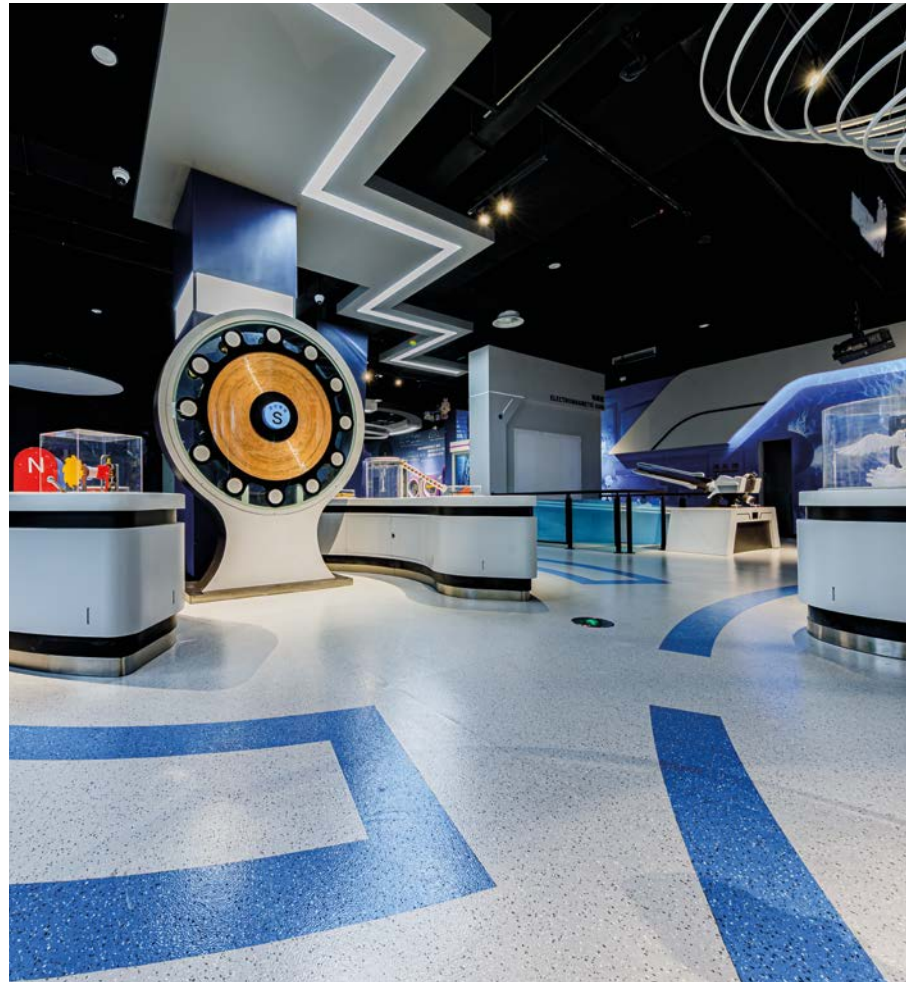


Object: Zibo Science Museum, Shandong province, China
Architect: Guangzhou Guangmei Electronic Technology Co., LTD.
Product: norament 926 grano, norament 926 satira, 5,000 m²
Application areas: Exhibition areas
Installation: 2020
Photos: © nora

Zibo Science Museum, Shandong province, China

Effective rubber flooring for new adventure museum

Opened in 2020, the Zibo Science and Technology Museum was built on an area of 15,000 square metres and rises to a height of 28.2 metres. Over five attractively designed floors, visitors of all ages can explore everything about science and technology. A thirst for knowledge and enthusiasm were to be expressed throughout the entire facility, which is why the architects chose nora rubber floors in vibrant colours.





Theatre for Lower Saxony, Hildesheim, Germany

Enjoying culture in a magnificent environment

Clear the stage – following extensive renovation work, the Theatre for Lower Saxony in Hildesheim, Germany, has been shining in new splendour since November 2019. The noraplan unita rubber flooring, which was installed in the hall, foyer, auditorium, stairs and passageways, blends perfectly into the striking design concept. The granite chips embedded in the flooring reflect the light in all its facets, making the floor an intrinsic part of the interior design scheme. In the foyer on the first floor, a hand-cut rosette inlay in graduated, elegant shades of grey is an attractive eye-catcher. In addition to its unique design, the rubber floor covering has also improved the building's acoustic qualities.



Object: Theatre for Lower Saxony, Hildesheim, Germany
Design concept: Color Concept Lab, Hannover, Germany
Product: noraplan unita, 2,200 m²
Application areas: Hall, foyer, stairs, passageways, auditorium
Installation: 2019
Photos: © Elmar Witt





Object: Erika-Fuchs-Haus Schwarzenbach, Germany

Architect: Planungsbüro für Baukunst Dominik Burkhard, Karlsruhe, Germany

Product: noraplan sentica, noraplan unita, 130 m²

Application areas: Exhibition area

Installation: 2014

Photos: © Stefan Meyer

Erika-Fuchs-Haus Schwarzenbach, Germany

Rubber floors for Duckburg

Dr. Erika Fuchs (1906 - 2005) was editor-in-chief of Mickey Mouse magazine. She lived in Schwarzenbach an der Saale for over 50 years and translated numerous Walt Disney comics into German over three decades. In her honour, the Erika Fuchs House, Germany's first comic museum, opened its doors in August 2015 in this small Upper Franconian town. A real eye-catcher in the museum rooms is the floor with the incorporated map of Duckburg and striking comic lettering. The original design was made possible by the rubber floors from nora systems.



Specifications are subject to change without notice. Errors and omissions excepted.
No liability is assumed for the correctness, completeness or accuracy of the
information. The product illustrations in this document may differ from the original.
This document does not constitute a contractual offer and serves only as non-binding
information.

The nora brand and any other registered trademarks used in this document are
registered to the company, the country or a company affiliated to nora systems GmbH.
Any other brand names used herein are the trademarks of their respective owners.

Contact details, local offices, authorized distributors and further information can be
found at www.nora.com.

Published by

nora systems GmbH
Höhnerweg 2-4
69469 Weinheim | Germany
www.nora.com