



nora **QuickShip**

**nora**<sup>®</sup>  
by **Interface**<sup>®</sup>



## Flooring you need, fast.

Available to ship within 10 business days, the nora<sup>®</sup> QuickShip program offers an array of norament<sup>®</sup> and noraplan<sup>®</sup> products in a variety of color and product combinations, including ESD flooring, stair tread, weld, and cove base options.

You need more than a floor. You need a supportive space that works to improve operations, efficiencies, health, safety and wellness. Made to the highest standards of quality, durability and service, nora<sup>®</sup> rubber flooring drastically reduces maintenance and noise, provides added comfort underfoot and delivers performance that lasts for decades.

# norament<sup>®</sup> 825 round

Rubber tile flooring with monochrome color and a classic round pastille surface for use in heavy traffic areas.



PRODUCT NORAMENT 825 ROUND COLOR 0882 PLATINUM GREY

## QuickShip Product Details



0884 DUST GREY



0882 PLATINUM GREY



0749 STONE GREY



0716 SLATE GREY



0702 BLACK

Available as norament round stairtreads

norament 825 round



Art. 1902

501 mm x 501 mm (~19.72 in x 19.72 in)

27.5 mm (~1.08 in) ~0.5 mm ~2.7 mm ~3.2 mm

# norament castello<sup>™</sup>

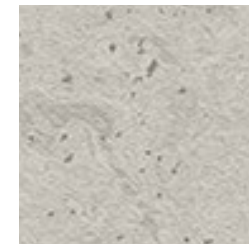
Rubber tile flooring with a lightly marbled pattern and a two-tone surface for maximum demands. Like stone, no two tiles look the same, offering wide scale variation for a natural aesthetic in large, open spaces.



PRODUCT NORAMENT CASTELLO COLOR 5355 PALAZZO

© nora

## QuickShip Product Details



5355 PALAZZO



5354 MANOR

norament castello



Art. 3167

1004 mm x 1004 mm (~39.53 in x 39.53 in)

~3.5 mm

Variations in color and design, even within one production batch, define the product's aesthetic character.

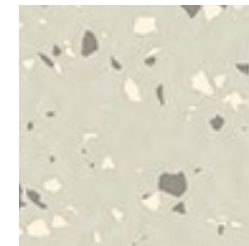
# norament<sup>®</sup> grano<sup>™</sup>

Rubber tile flooring combining a rich, contrasting granular design with a hammered surface for use in extremely heavy traffic areas. Select colors available as norament<sup>®</sup> grano<sup>™</sup> ed - electrostatically dissipative flooring for optimum ESD protection of electronic devices and equipment. Both options resist most oils and greases and are suitable for forklift truck areas.



PRODUCT NORAMENT GRANO COLORS 5319 SPIKENARD, 5302 ANGELICA ROOT & 5301 WHITE FIR

## QuickShip Product Details



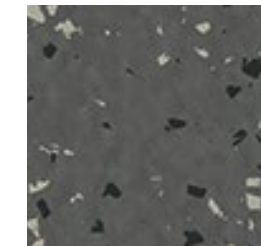
5301 WHITE FIR ⚡



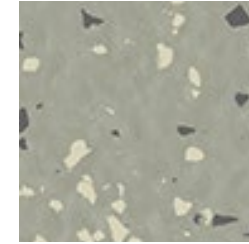
5302 ANGELICA ROOT



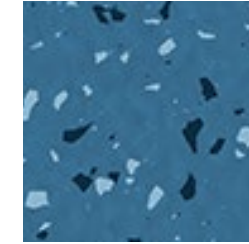
5303 FRANKINCENSE



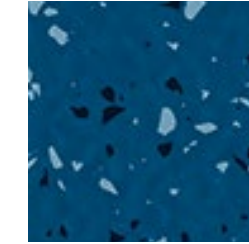
5304 BLACK PEPPER ⚡



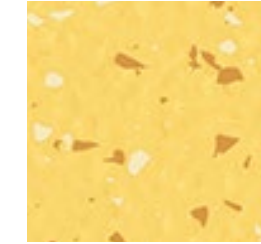
5306 CAMPHOR ⚡



5319 SPIKENARD



5320 SASSAFRAS



5329 BERGAMOT



5332 GERANIUM

**Note:** Stair tread colors 5303 and 5304 can be supplied with textured visually impaired strips in color 8015 Black.

Available as norament grano stairtreads

norament grano

9

Art. 1880

1004 mm x 1004 mm (~39.53 in x 39.53 in)



norament grano ed ⚡

3

Art. 1880

1002 mm x 1002 mm (~39.45 in x 39.45 in)



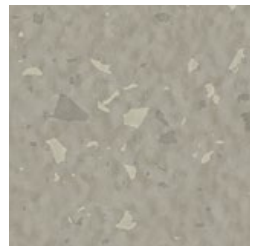
# norament<sup>®</sup> satura<sup>™</sup>

Rubber tile flooring with a tone-on-tone granular design and a hammered surface for use in extremely heavy traffic areas.

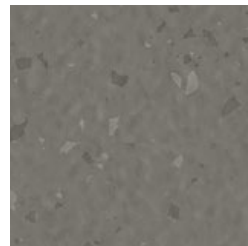


PRODUCT NORAMENT SATURA COLOR 5110 ARA  
© Enrique Samson

## QuickShip Product Details



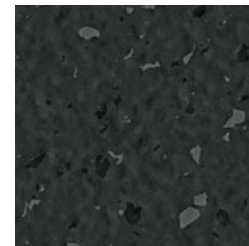
5110 ARA



5111 CASTOR



5107 CALLISTO



5116 ARCTURUS

Available as norament satura stairtreads

norament satura



Art. 1880

1004 mm x 1004 mm (~39.53 in x 39.53 in)



~3.5 mm



PRODUCT NORAMENT SATURA COLOR 5110 ARA  
© Enrique Samson

# noraplan convia™

Rubber tile flooring with a solid base color, dirt-concealing neutral granules and a smooth surface for use in heavy traffic areas.



PRODUCT-NORAPLAN CONVIA COLOR 7360 STONE KHAKI  
© Elmär Witt/Mirko Müller

## QuickShip Product Details



7360 STONE KHAKI



7355 SILVER SAND



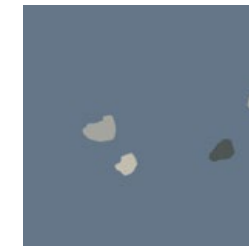
7356 SHALE



7352 LAVA ROCK



7366 PATINA GREEN



7370 PIGEON BLUE

noraplan convia  
6

Art. 270F  
□ 610 mm x 610 mm (~24.015 in x 24.015 in)

~2 mm

# noraplan **environcare**™

Rubber sheet flooring with characteristic granules and a changing base color that consists of three harmoniously matched color components. Offered in a smooth surface and suitable for use in heavy traffic areas.



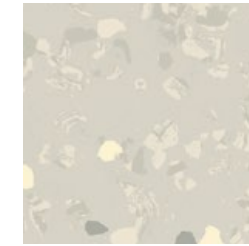
PRODUCT NORAPLAN ENVIRONCARE COLOR 7032 SLEIGH RIDE  
© CR-BEELDWERKEN

## QuickShip Product Details

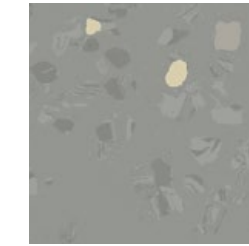
### 3 mm Color Range



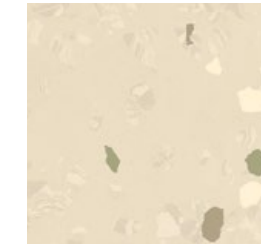
7031 BASEBALL GAME



7035 SNOW SHOEING



7036 CLAM BAKE



7051 SNOWBALL FIGHT



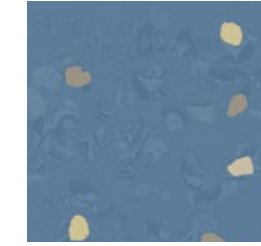
7052 SLEDDING



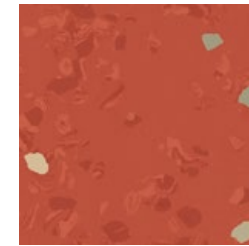
7053 POT LUCK



7061 FARMERS MARKET

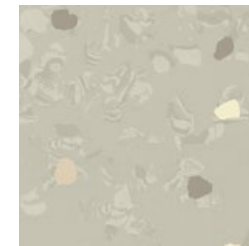


7065 POOL PARTY



7073 APPLE PICKING

### 2 mm Color Range



7031 BASEBALL GAME



7032 SLEIGH RIDE

#### noraplan environcare 3 mm



Art. 1463  
12 m x 1.22 m (~39.37 ft x 48 in)



#### noraplan environcare 2 mm



Art. 1462  
15 m x 1.22 m (~49.21 ft x 48 in)



# noraplan<sup>®</sup> sentica<sup>™</sup>

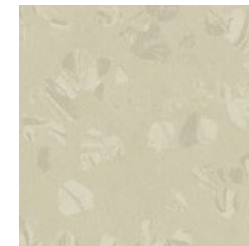
Rubber sheet flooring in a tone-on-tone design with harmoniously matched color components and a smooth surface for use in heavy traffic areas.



PRODUCT NORAPLAN SENTICA COLOR 6524 FROST BITE  
© Brigida González

## QuickShip Product Details

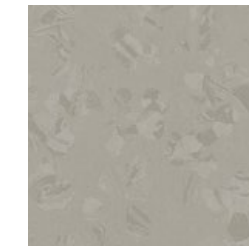
### 3 mm Color Range



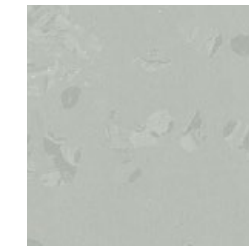
6505 SILK



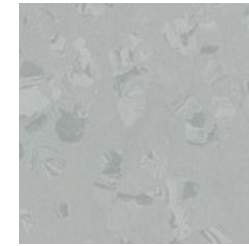
6506 CASHMERE



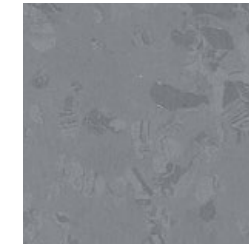
6520 SNOW DAY



6524 FROST BITE



6525 OCEAN MIST



6526 MOUNTAIN AIR

### 2 mm Color Range



6520 SNOW DAY

#### noraplan sentica 3 mm



Art. 1701

12 m x 1.22 m (~39.37 ft x 48 in)



#### noraplan sentica 2 mm



Art. 1700

15 m x 1.22 m (~49.21 ft x 48 in)







# norament<sup>®</sup> stairtreads

Our one-piece stair coverings include stair nosing, riser and tread and are built to fit straight steps with an angled edge. norament stairtreads are designed to withstand extremely heavy traffic while maintaining their good looks. They are installed with nora<sup>®</sup> stepfix™ 240 double-sided dry adhesive tape—an immediate trafficking solution for an all-around fast turnover.

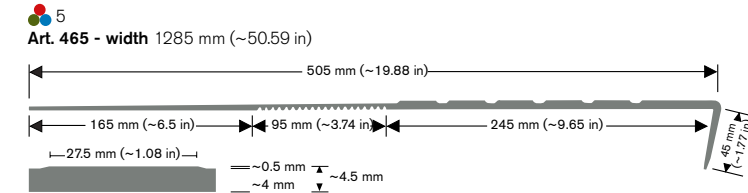


## QuickShip Product Details (continued)

### norament round stairtreads

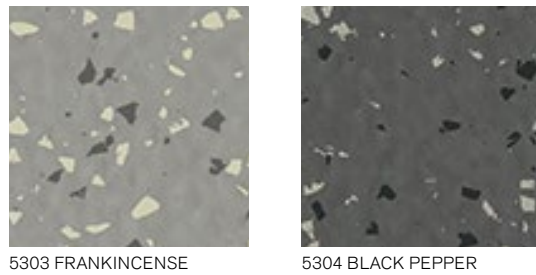


### norament round stairtreads



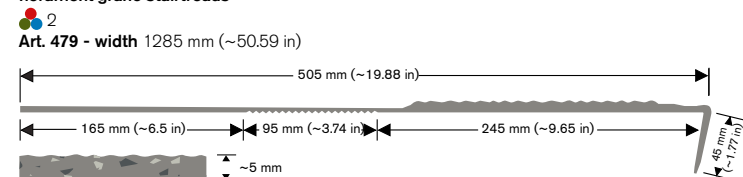
## QuickShip Product Details

### norament grano stairtreads



**Note:** Can be supplied with textured visually impaired strips in color 8015 Black.

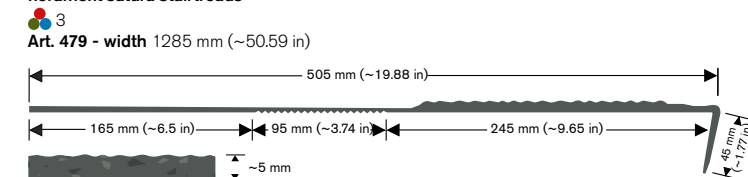
### norament grano stairtreads



### norament satura stairtreads



### norament satura stairtreads



# nora<sup>®</sup> cold weld


nora<sup>®</sup> 1-component cold weld was developed for use with nora rubber floor coverings. In general, nora flooring does not require welding as it does not contain phthalate plasticizers and does not shrink after installation. Unless specified, welding of norament and noraplan flooring is optional. It is recommended for special applications such as installation on moisture-sensitive subfloors, areas with permanent intensive wet cleaning, operating rooms and other areas with specific hygienic requirements, and vertical external corners.



© Elmar Witt

## QuickShip Product Details

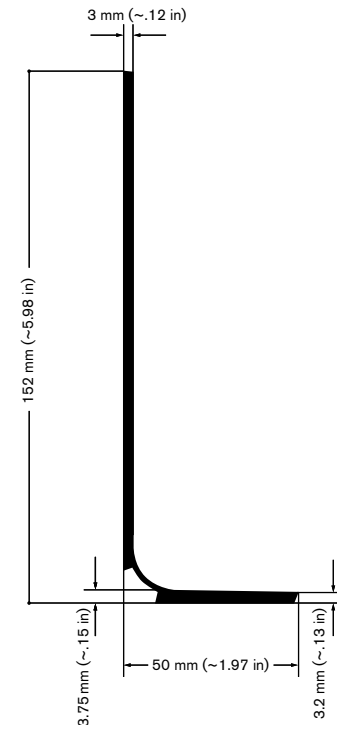
 0702	 0716	 0749	 0882
 0884	 1253	 2382	 2666
 2781	 2897	 2931	 4881
 5107	 5110	 5111	 5116
 5121	 5301	 5302	 5303
 5306	 5319	 5354	 5355
 6505	 6506	 6520	 6524
 6525	 6708	 7052	 7053
 7061	 7065	 7073	

**nora cold weld**  
 35  
**Art. 928**  
 300 ml (10 fl oz)  
 ~50-60 LF per unit

Note: please remember, we have joint cutters, spatulas and cold weld tape available for order.

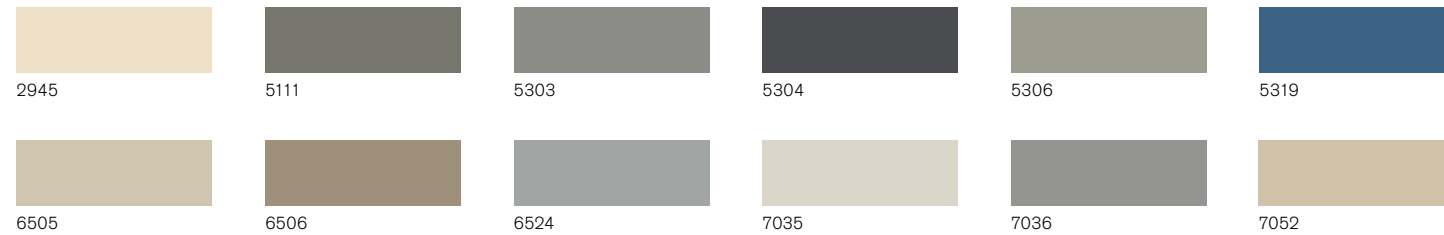
# nora<sup>®</sup> sanitary base

Made to match the respective floor coverings, our rubber sanitary cove base is easy to clean and suitable for areas with stringent hygienic requirements. It is impact and shock resistant, does not contain phthalate plasticizers and retains its functional reliability for many years.



**S 3019 D**  
For floor covering thickness from 3 to 3.5 mm (~.12 in to .14 in)

## QuickShip Product Details



# Service Level Promise

## QS nora QuickShip Guidelines:

- Timing: Ships within 10 business days
- Maximum Order Quantities
  - noraplan and norament flooring (neutral colors): up to 600 m<sup>2</sup> (~6,458 SF)
  - noraplan and norament flooring (accent colors): up to 100 m<sup>2</sup> (~1,076 SF)
  - norament stairtreads: up to 75 pieces
  - nora cold weld: up to 15 units
  - nora sanitary base: up to 5 rolls
- Minimum Order Quantities
  - noraplan rolls: one roll
  - noraplan tiles: one box
  - norament tiles: one tile
  - norament stairtreads: one piece
  - nora cold weld: one unit
  - nora sanitary base: one roll
- Product sizes standard as published; no cutting
- Except where noted, norament stairtreads are 4 ft standard treads only; no routing or VI
- No overages
- No holds
- No allocations to an order for more than 48 hours
- Inventory allocated upon credit approval
- Consider transit times for shipments to Canada and Latin America

nora sanitary base



Art. 817 – S 3019 D  
Piece Length: 10 m (~32.81 ft)

\*Conforms to ASTM F1861 – Standard Specification for Resilient Wall Base, Type TP: Thermoplastic Rubber, Group 1

# nora® QuickShip List

Product Name	Article	Color	Thickness	Size	Format	Service Level Promise ships within 10 business days
norament 825 round	1902	0702 Black	3.2 mm	501 mm x 501 mm (~19.72 in x 19.72 in)	tile	up to 600 m <sup>2</sup> (~6,458 SF)
norament 825 round	1902	0716 Slate Grey	3.2 mm	501 mm x 501 mm (~19.72 in x 19.72 in)	tile	up to 600 m <sup>2</sup> (~6,458 SF)
norament 825 round	1902	0749 Stone Grey	3.2 mm	501 mm x 501 mm (~19.72 in x 19.72 in)	tile	up to 600 m <sup>2</sup> (~6,458 SF)
norament 825 round	1902	0882 Platinum Grey	3.2 mm	501 mm x 501 mm (~19.72 in x 19.72 in)	tile	up to 600 m <sup>2</sup> (~6,458 SF)
norament 825 round	1902	0884 Dust Grey	3.2 mm	501 mm x 501 mm (~19.72 in x 19.72 in)	tile	up to 600 m <sup>2</sup> (~6,458 SF)
norament castello	3167	5354 Manor	3.5 mm	1004 mm x 1004 mm (~39.53 in x 39.53 in)	tile	up to 600 m <sup>2</sup> (~6,458 SF)
norament castello	3167	5355 Palazzo	3.5 mm	1004 mm x 1004 mm (~39.53 in x 39.53 in)	tile	up to 600 m <sup>2</sup> (~6,458 SF)
norament grano	1880	5301 White Fir	3.5 mm	1004 mm x 1004 mm (~39.53 in x 39.53 in)	tile	up to 600 m <sup>2</sup> (~6,458 SF)
norament grano	1880	5302 Angelica Root	3.5 mm	1004 mm x 1004 mm (~39.53 in x 39.53 in)	tile	up to 600 m <sup>2</sup> (~6,458 SF)
norament grano	1880	5303 Frankincense	3.5 mm	1004 mm x 1004 mm (~39.53 in x 39.53 in)	tile	up to 600 m <sup>2</sup> (~6,458 SF)
norament grano	1880	5304 Black Pepper	3.5 mm	1004 mm x 1004 mm (~39.53 in x 39.53 in)	tile	up to 600 m <sup>2</sup> (~6,458 SF)
norament grano	1880	5306 Camphor	3.5 mm	1004 mm x 1004 mm (~39.53 in x 39.53 in)	tile	up to 600 m <sup>2</sup> (~6,458 SF)
norament grano	1880	5319 Spikenard	3.5 mm	1004 mm x 1004 mm (~39.53 in x 39.53 in)	tile	up to 100 m <sup>2</sup> (~1,076 SF)
norament grano	1880	5320 Sassafras	3.5 mm	1004 mm x 1004 mm (~39.53 in x 39.53 in)	tile	up to 100 m <sup>2</sup> (~1,076 SF)
norament grano	1880	5329 Bergamot	3.5 mm	1004 mm x 1004 mm (~39.53 in x 39.53 in)	tile	up to 100 m <sup>2</sup> (~1,076 SF)
norament grano	1880	5332 Geranium	3.5 mm	1004 mm x 1004 mm (~39.53 in x 39.53 in)	tile	up to 100 m <sup>2</sup> (~1,076 SF)
norament grano ed	1880	5301 White Fir	3.5 mm	1002 mm x 1002 mm (~39.45 in x 39.45 in)	tile	up to 600 m <sup>2</sup> (~6,458 SF)
norament grano ed	1880	5304 Black Pepper	3.5 mm	1002 mm x 1002 mm (~39.45 in x 39.45 in)	tile	up to 600 m <sup>2</sup> (~6,458 SF)
norament grano ed	1880	5306 Camphor	3.5 mm	1002 mm x 1002 mm (~39.45 in x 39.45 in)	tile	up to 600 m <sup>2</sup> (~6,458 SF)
norament satura	1880	5107 Callisto	3.5 mm	1004 mm x 1004 mm (~39.53 in x 39.53 in)	tile	up to 600 m <sup>2</sup> (~6,458 SF)
norament satura	1880	5110 Ara	3.5 mm	1004 mm x 1004 mm (~39.53 in x 39.53 in)	tile	up to 600 m <sup>2</sup> (~6,458 SF)
norament satura	1880	5111 Castor	3.5 mm	1004 mm x 1004 mm (~39.53 in x 39.53 in)	tile	up to 600 m <sup>2</sup> (~6,458 SF)
norament satura	1880	5116 Arcturus	3.5 mm	1004 mm x 1004 mm (~39.53 in x 39.53 in)	tile	up to 600 m <sup>2</sup> (~6,458 SF)
norament grano stairtread VI	479	5303 Frankincense VI 8015 Black	5 mm	1285 mm (~50.59 in)	tread	up to 75 pieces
norament grano stairtread VI	479	5304 Black Pepper VI 8015 Black	5 mm	1285 mm (~50.59 in)	tread	up to 75 pieces
norament grano stairtread	479	5303 Frankincense	5 mm	1285 mm (~50.59 in)	tread	up to 75 pieces
norament grano stairtread	479	5304 Black Pepper	5 mm	1285 mm (~50.59 in)	tread	up to 75 pieces
norament round stairtread	465	0702 Black	4.5 mm	1285 mm (~50.59 in)	tread	up to 75 pieces
norament round stairtread	465	0716 Slate Grey	4.5 mm	1285 mm (~50.59 in)	tread	up to 75 pieces
norament round stairtread	465	0749 Stone Grey	4.5 mm	1285 mm (~50.59 in)	tread	up to 75 pieces
norament round stairtread	465	0882 Platinum Grey	4.5 mm	1285 mm (~50.59 in)	tread	up to 75 pieces
norament round stairtread	465	0884 Dust Grey	4.5 mm	1285 mm (~50.59 in)	tread	up to 75 pieces
norament satura stairtread	479	5107 Callisto	5 mm	1285 mm (~50.59 in)	tread	up to 75 pieces
norament satura stairtread	479	5110 Ara	5 mm	1285 mm (~50.59 in)	tread	up to 75 pieces
norament satura stairtread	479	5116 Arcturus	5 mm	1285 mm (~50.59 in)	tread	up to 75 pieces
noraplan convia	270F	7352 Lava Rock	2 mm	610 mm x 610 mm (~24.015 in x 24.015 in)	tile	up to 600 m <sup>2</sup> (~6,458 SF)
noraplan convia	270F	7355 Silver Sand	2 mm	610 mm x 610 mm (~24.015 in x 24.015 in)	tile	up to 600 m <sup>2</sup> (~6,458 SF)
noraplan convia	270F	7356 Shale	2 mm	610 mm x 610 mm (~24.015 in x 24.015 in)	tile	up to 600 m <sup>2</sup> (~6,458 SF)
noraplan convia	270F	7360 Stone Khaki	2 mm	610 mm x 610 mm (~24.015 in x 24.015 in)	tile	up to 600 m <sup>2</sup> (~6,458 SF)
noraplan convia	270F	7366 Patina Green	2 mm	610 mm x 610 mm (~24.015 in x 24.015 in)	tile	up to 100 m <sup>2</sup> (~1,076 SF)
noraplan convia	270F	7370 Pigeon Blue	2 mm	610 mm x 610 mm (~24.015 in x 24.015 in)	tile	up to 100 m <sup>2</sup> (~1,076 SF)
noraplan environcare	1462	7031 Baseball Game	2 mm	15 m x 1.22 m (~49.21 ft x 48 in)	roll	up to 600 m <sup>2</sup> (~6,458 SF)
noraplan environcare	1462	7032 Sleigh Ride	2 mm	15 m x 1.22 m (~49.21 ft x 48 in)	roll	up to 600 m <sup>2</sup> (~6,458 SF)
noraplan environcare	1463	7031 Baseball Game	3 mm	12 m x 1.22 m (~39.37 ft x 48 in)	roll	up to 600 m <sup>2</sup> (~6,458 SF)
noraplan environcare	1463	7035 Snow Shoeing	3 mm	12 m x 1.22 m (~39.37 ft x 48 in)	roll	up to 600 m <sup>2</sup> (~6,458 SF)
noraplan environcare	1463	7036 Clam Bake	3 mm	12 m x 1.22 m (~39.37 ft x 48 in)	roll	up to 600 m <sup>2</sup> (~6,458 SF)
noraplan environcare	1463	7051 Snowball Fight	3 mm	12 m x 1.22 m (~39.37 ft x 48 in)	roll	up to 600 m <sup>2</sup> (~6,458 SF)
noraplan environcare	1463	7052 Sledding	3 mm	12 m x 1.22 m (~39.37 ft x 48 in)	roll	up to 600 m <sup>2</sup> (~6,458 SF)
noraplan environcare	1463	7053 Pot Luck	3 mm	12 m x 1.22 m (~39.37 ft x 48 in)	roll	up to 600 m <sup>2</sup> (~6,458 SF)
noraplan environcare	1463	7061 Farmers Market	3 mm	12 m x 1.22 m (~39.37 ft x 48 in)	roll	up to 100 m <sup>2</sup> (~1,076 SF)
noraplan environcare	1463	7065 Pool Party	3 mm	12 m x 1.22 m (~39.37 ft x 48 in)	roll	up to 100 m <sup>2</sup> (~1,076 SF)
noraplan environcare	1463	7073 Apple Picking	3 mm	12 m x 1.22 m (~39.37 ft x 48 in)	roll	up to 100 m <sup>2</sup> (~1,076 SF)

Product Name	Article	Color	Thickness	Size	Format	Service Level Promise ships within 10 business days
noraplan sentica	1700	6520 Snow Day	2 mm	15 m x 1.22 m (~49.21 ft x 48 in)	roll	up to 600 m <sup>2</sup> (~6,458 SF)
noraplan sentica	1701	6505 Silk	3 mm	12 m x 1.22 m (~39.37 ft x 48 in)	roll	up to 600 m <sup>2</sup> (~6,458 SF)
noraplan sentica	1701	6506 Cashmere	3 mm	12 m x 1.22 m (~39.37 ft x 48 in)	roll	up to 600 m <sup>2</sup> (~6,458 SF)
noraplan sentica	1701	6520 Snow Day	3 mm	12 m x 1.22 m (~39.37 ft x 48 in)	roll	up to 600 m <sup>2</sup> (~6,458 SF)
noraplan sentica	1701	6524 Frost Bite	3 mm	12 m x 1.22 m (~39.37 ft x 48 in)	roll	up to 600 m <sup>2</sup> (~6,458 SF)
noraplan sentica	1701	6525 Ocean Mist	3 mm	12 m x 1.22 m (~39.37 ft x 48 in)	roll	up to 600 m <sup>2</sup> (~6,458 SF)
noraplan sentica	1701	6526 Mountain Air	3 mm	12 m x 1.22 m (~39.37 ft x 48 in)	roll	up to 600 m <sup>2</sup> (~6,458 SF)
nora cold weld	0928	0702	-	300 ml (~10 fl oz)	unit	up to 15 units
nora cold weld	0928	0716	-	300 ml (~10 fl oz)	unit	up to 15 units
nora cold weld	0928	0749	-	300 ml (~10 fl oz)	unit	up to 15 units
nora cold weld	0928	0882	-	300 ml (~10 fl oz)	unit	up to 15 units
nora cold weld	0928	0884	-	300 ml (~10 fl oz)	unit	up to 15 units
nora cold weld	0928	1253	-	300 ml (~10 fl oz)	unit	up to 15 units
nora cold weld	0928	2382	-	300 ml (~10 fl oz)	unit	up to 15 units
nora cold weld	0928	2666	-	300 ml (~10 fl oz)	unit	up to 15 units
nora cold weld	0928	2781	-	300 ml (~10 fl oz)	unit	up to 15 units
nora cold weld	0928	2897	-	300 ml (~10 fl oz)	unit	up to 15 units
nora cold weld	0928	2931	-	300 ml (~10 fl oz)	unit	up to 15 units
nora cold weld	0928	4881	-	300 ml (~10 fl oz)	unit	up to 15 units
nora cold weld	0928	5107	-	300 ml (~10 fl oz)	unit	up to 15 units
nora cold weld	0928	5110	-	300 ml (~10 fl oz)	unit	up to 15 units
nora cold weld	0928	5111	-	300 ml (~10 fl oz)	unit	up to 15 units
nora cold weld	0928	5116	-	300 ml (~10 fl oz)	unit	up to 15 units
nora cold weld	0928	5121	-	300 ml (~10 fl oz)	unit	up to 15 units
nora cold weld	0928	5301	-	300 ml (~10 fl oz)	unit	up to 15 units
nora cold weld	0928	5302	-	300 ml (~10 fl oz)	unit	up to 15 units
nora cold weld	0928	5303	-	300 ml (~10 fl oz)	unit	up to 15 units
nora cold weld	0928	5306	-	300 ml (~10 fl oz)	unit	up to 15 units
nora cold weld	0928	5319	-	300 ml (~10 fl oz)	unit	up to 15 units
nora cold weld	0928	5354	-	300 ml (~10 fl oz)	unit	up to 15 units
nora cold weld	0928	5355	-	300 ml (~10 fl oz)	unit	up to 15 units
nora cold weld	0928	6505	-	300 ml (~10 fl oz)	unit	up to 15 units
nora cold weld	0928	6506	-	300 ml (~10 fl oz)	unit	up to 15 units
nora cold weld	0928	6520	-	300 ml (~10 fl oz)	unit	up to 15 units
nora cold weld	0928	6524	-	300 ml (~10 fl oz)	unit	up to 15 units
nora cold weld	0928	6525	-	300 ml (~10 fl oz)	unit	up to 15 units
nora cold weld	0928	6708	-	300 ml (~10 fl oz)	unit	up to 15 units
nora cold weld	0928	7052	-	300 ml (~10 fl oz)	unit	up to 15 units
nora cold weld	0928	7053	-	300 ml (~10 fl oz)	unit	up to 15 units
nora cold weld	0928	7061	-	300 ml (~10 fl oz)	unit	up to 15 units
nora cold weld	0928	7065	-	300 ml (~10 fl oz)	unit	up to 15 units
nora cold weld	0928	7073	-	300 ml (~10 fl oz)	unit	up to 15 units
nora sanitary base (S 3019 D)	0817	2945	-	10 m (~32.81 ft)	roll	up to 5 rolls
nora sanitary base (S 3019 D)	0817	5111	-	10 m (~32.81 ft)	roll	up to 5 rolls
nora sanitary base (S 3019 D)	0817	5303	-	10 m (~32.81 ft)	roll	up to 5 rolls
nora sanitary base (S 3019 D)	0817	5304	-	10 m (~32.81 ft)	roll	up to 5 rolls
nora sanitary base (S 3019 D)	0817	5306	-	10 m (~32.81 ft)	roll	up to 5 rolls
nora sanitary base (S 3019 D)	0817	5319	-	10 m (~32.81 ft)	roll	up to 5 rolls
nora sanitary base (S 3019 D)	0817	6505	-	10 m (~32.81 ft)	roll	up to 5 rolls
nora sanitary base (S 3019 D)	0817	6506	-	10 m (~32.81 ft)	roll	up to 5 rolls
nora sanitary base (S 3019 D)	0817	6524	-	10 m (~32.81 ft)	roll	up to 5 rolls
nora sanitary base (S 3019 D)	0817	7035	-	10 m (~32.81 ft)	roll	up to 5 rolls
nora sanitary base (S 3019 D)	0817	7036	-	10 m (~32.81 ft)	roll	up to 5 rolls
nora sanitary base (S 3019 D)	0817	7052	-	10 m (~32.81 ft)	roll	up to 5 rolls

## Why nora® rubber flooring?

### Product Benefits



#### Reduced Maintenance

Little more than water needed - no finishes, coatings or harsh chemicals necessary.



#### Quiet Acoustical Performance

Attenuate noise pollution.



#### Ergonomic Design

Add comfort underfoot, reducing foot and leg pain.



#### Durable Surface

Withstand extreme stress from heavy rolling loads and wheeled traffic.



#### Superior Slip Resistance

Help to create safer spaces.



#### Supports Infection Control

Disinfect thoroughly due to a dense, non-porous surface.

### Sustainability Verifications



#### Cradle to Cradle Certified® Silver

Certification of whether a product is safe, circular and responsibly made. Applies to nora 926 and 913 compound floor coverings and stair treads.



#### GREENGUARD Gold

All nora floor coverings & adhesives are certified for low VOC emissions.



#### Environmental Product Declaration (EPD)

A statement of product ingredients and environmental impacts over the entire life cycle of a product. A comprehensive life cycle assessment (LCA) is performed to ISO standards to develop an EPD, after which both the EPD and LCA must be third party verified. Applies to nora 926 and 913 compound floor coverings and stair treads, and ESD and acoustic floor coverings.



#### Health Product Declaration (HPD)

A transparency tool for evaluating whether a product supports Green Chemistry. As part of our work on Health and Materials, Interface continuously reduces the environmental and health impacts of our products through elimination of materials of concern. Applies to nora 926 and 913 compound floor coverings and stair treads, and ESD floor coverings.

### Integrated System

nora and Interface cover every area of your building – all from a single source. Create harmonious, space-specific design with our system of soft and resilient floor coverings, including special floorings, stair treads and accessories.

### Outstanding Service

From design to post-installation, we have the experts to support your project at every step and can even be a valued resource for your organization's sustainability mission.

### nora.com

For additional information regarding usage in recommended applications, contact us or visit [nora.com](http://nora.com).

#### ORDER SAMPLES

Online at [www.nora.com](http://www.nora.com)

Call 1.800.332.NORA

Email your sales rep or customer support specialist

#### BROWSE NORA.COM

- Find the right floor for your project with nora Flooring Finder
- Design your floor with the nora Room Designer
- Find technical and environmental documents

We have tried our very best to accurately represent product colors. However, due to the nature of printed materials, color of actual products may vary slightly. Please request a sample to see actual product color.

All product specifications reflect averages derived from product sample testing, are subject to normal manufacturing and testing tolerances and inherent pattern variances, and may be changed without notice. For more information about these and other important attributes of the product(s) described herein, including recycled content and limited warranty information, please see [nora.com](http://nora.com).

nora®, norament®, and noraplan® are trademarks owned by nora systems GmbH and registered in the United States, Canada, and other countries. Cradle to Cradle Certified® is a registered trademark of the Cradle to Cradle Products Innovation Institute. Other labels used here are trademarks of their respective owners.



Printed on 50% post consumer waste (PCW) fiber manufactured using wind power.

**nora systems, Inc.**  
9 Northeastern Blvd.  
Salem, NH 03079  
T: 800.332.NORA  
T: 603.894.1021  
info-us@nora.com  
www.nora.com