

Errors as well as misprints and changes reserved. No guarantee is given for the accuracy and completeness of the information. The product images in this document may differ from the original. This document is not a contractual offer and only serves to provide non-binding information.

The nora brand and all other registered trademarks used in this document are registered to nora systems GmbH or its affiliates or subsidiaries. Other labels used here are trademarks of their respective owners.

**nora systems, Inc.**  
9 Northeastern Blvd.  
Salem, NH 03079  
T: 800.332.NORA  
T: 603.894.1021  
info-us@nora.com  
www.nora.com

08/2023 Form Order #809861



norament kivo

**nora**<sup>®</sup>  
by Interface<sup>®</sup>



## Industrial charm meets modern form

Concrete, steel and exposed brick are statement materials in modern architecture and interiors. In this industrial chic aesthetic, concrete flooring is a staple, but you can achieve the look with added performance. Meet norament kivo™ — a durable rubber flooring with the contemporary look of concrete and the added benefits of sound reduction and underfoot comfort.

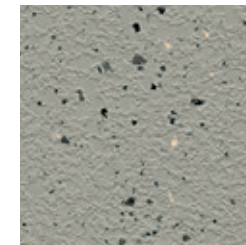
# Natural colors, modern style

norament kivo offers organic patterning and eight neutral colors that pair excellently with modern statement materials, but it provides the performance and ease of maintenance you expect from nora® rubber flooring.

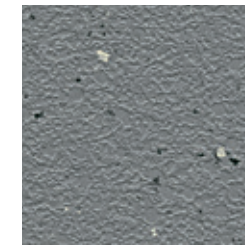
With an irregular grain design and slightly structured, two-tone surface, norament kivo offers a quieter alternative to concrete and sets the right tone for any space.



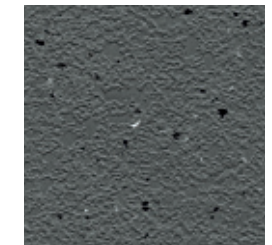
5361 PUMICE



5362 FLINT



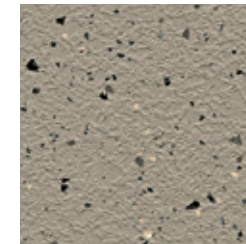
5363 SHARKSKIN



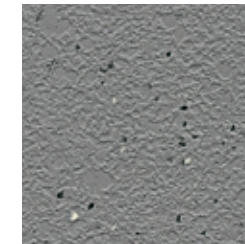
5364 PEWTER



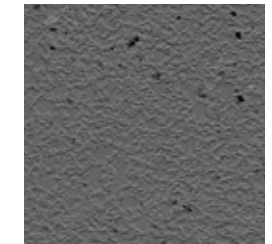
5365 CEMENT



5366 COBBLESTONE



5367 TITANIUM



5368 GRANITE

## norament kivo

Art. 3166  8

1004 mm x 1004 mm (~39.53 in x 39.53 in)

 ~2.7 mm

Product Construction	Homogeneous Rubber Tile
Class/ASTM F1344	Type IB and Grade 2
Surface Type	Two-Tone
Indoor Air Quality	GREENGUARD Gold
Full Life Cycle Carbon Emissions	CDPH 01350 Compliant
LEED v4	Carbon Neutral Floors™
	Contributes to multiple IEQ and MR credits

*Variations in granulate scattering, even within one production batch, define the product's aesthetic character.*

*Multiple installation options, including high moisture solutions.*

*View details and the full product specification at [nora.com](https://nora.com).*

## Installation Method



DIRECTIONAL

*Welding is not required unless specified. View weld recommendations at [nora.com](https://nora.com).*



## Why nora® rubber flooring?



**Reduced Maintenance**  
Little more than water needed - no finishes, coatings or harsh chemicals necessary.



**Quiet Acoustical Performance**  
Attenuate noise pollution.



**Durable Surface**  
Withstand extreme stress from heavy rolling loads and wheeled traffic.



**Ergonomic Design**  
Add comfort underfoot, reducing foot and leg pain.



**Superior Slip Resistance**  
Help to create safer spaces.



**Supports Infection Control**  
Disinfect completely due to a dense, non-porous surface.



**Cradle to Cradle Certified® Silver**  
Certification of whether a product is safe, circular and responsibly made. Applies to nora 926 and 913 recipe flooring and stair treads.



**Carbon Neutral Floors™**  
Third party verified carbon neutral throughout its entire life cycle as part of Interface's Carbon Neutral Floors program. Learn more at [interface.com/carbonneutral](http://interface.com/carbonneutral)



**GREENGUARD Gold**  
Certified low VOC emissions.

## Integrated system

nora and Interface cover every area of your building – all from a single source. Create harmonious, space-specific design with our system of soft and resilient floor coverings, including special floorings, stair treads and accessories.

## Outstanding service

From design to post-installation, we have the experts to support your project at every step and can even be a valued resource for your organization's sustainability mission.

For additional information regarding usage in recommended applications, contact us or visit [nora.com](http://nora.com).

➤ **ORDER SAMPLES**  
Online at [www.nora.com](http://www.nora.com)  
Call 1.800.332.NORA  
Email your sales rep or customer support specialist

**BROWSE NORA.COM**

- Design your floor with nora Room Designer
- Find technical and environmental documents
- Access BIM/Revit Files

## Product warranty

We will be happy to supply specific test results on all nora systems, Inc. products.

**nora® by Interface®**  
**Product Warranty – Americas (Excerpt)**  
nora systems, Inc. (nora) warrants the following nora® brand products (collectively, the "Warranted nora Brand Flooring Products") as set forth below: norament® and noraplan® rubber flooring, norament rubber stairtread (excluding visually impaired strips), accessories (excluding visually impaired strips), nora® nTx™ 020 bond enhancer and adhesives, and the conductivity of its Electrostatic Dissipative ("ESD") flooring system (norament ed and noraplan ed flooring and adhesive).

This limited warranty and the applicable Installation Instructions and Maintenance Guidelines are subject to change at nora's discretion and without notice. Please contact nora or visit the [nora.com](http://nora.com) website for the latest versions. For additional information regarding usage in recommended applications, please refer to [www.nora.com](http://www.nora.com) or call 1-800-332-NORA. Warranty periods commence on the date of invoice of the product to the original end-use customer.