



Errors as well as misprints and changes reserved. No guarantee is given for the accuracy and completeness of the information. The product images in this document may differ from the original. This document is not a contractual offer and only serves to provide non-binding information.

The nora brand and all other registered trademarks used in this document are registered to nora systems GmbH or its affiliates or subsidiaries. Other labels used here are trademarks of their respective owners.

nora systems, Inc.
9 Northeastern Blvd.
Salem, NH 03079
T: 800.332.NORA
T: 603.894.1021
info-us@nora.com
www.nora.com

08/2023 Form Order #809862



norament castello

nora[®]
by **Interface**[®]



Made for eternity

Influenced by the enduring beauty and natural materials of old-world architecture, norament castello™ has a timeless, limestone inspired design that creates a sense of luxury. With its two-tone surface and marbling, it is modern yet classic with the performance and ease of maintenance you expect from nora® rubber flooring.

Natural design for demanding spaces

norament castello features a lightly marbled pattern that moves across the floor. Like stone, no two tiles look the same, offering wide scale variation for a natural aesthetic in large, open spaces.

And its dense, non-porous surface makes it extremely resistant to wear and offers ease of maintenance and the inherent underfoot comfort of rubber flooring. norament castello is a perfect fit for any interior application.



© Elmar Witt



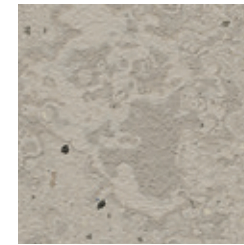
PRODUCT NORAMENT CASTELLO COLOR 5352 CITADEL INSTALLED DIRECTIONAL

© nora

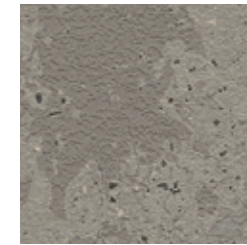


Classic design with a modern vibe

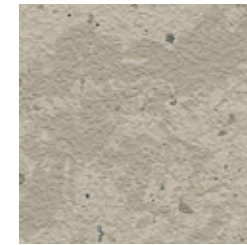
Sure to complement any building from modern to historical, norament castello's slightly structured, two-tone surface and varied marbling offer a warm, stone aesthetic with the acoustic and ergonomic performance of rubber.



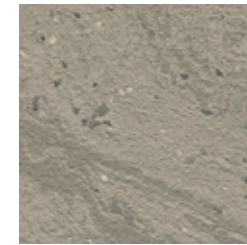
5351 CHATEAU



5352 CITADEL



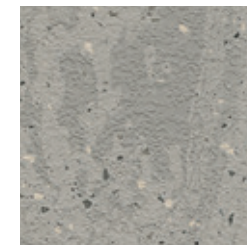
5353 CORTEGE




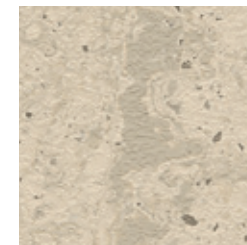
5354 MANOR 




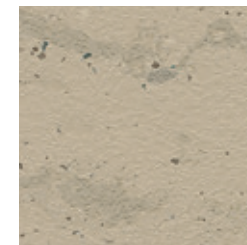
5355 PALAZZO 



5356 DOMUS 



5357 PALAIS 



5358 CATHEDRAL

norament castello

Art. 3167  8
 1004 mm x 1004 mm (~39.53 in x 39.53 in)



Product Construction	Homogeneous Rubber Tile
Class/ASTM F1344	Type IB and Grade 2
Surface Type	Two-tone
Indoor Air Quality	GREENGUARD Gold CDPH 01350 Compliant
Full Life Cycle Carbon Emissions	Carbon Neutral Floors™
LEED v4	Contributes to multiple IEQ and MR credits

Variations in color and design, even within one production batch, define the product's aesthetic character.



Contact your sales representative or visit nora.com for QuickShip options.



Available as norament castello™ nTx™. Contact your sales representative for details and lead times.

Multiple installation options, including high moisture solutions.

View details and the full product specification at nora.com.

Installation Method



DIRECTIONAL

Welding is not required unless specified. View weld recommendations at nora.com.



Why nora® rubber flooring?



Reduced Maintenance
Little more than water needed - no finishes, coatings or harsh chemicals necessary.



Quiet Acoustical Performance
Attenuate noise pollution.



Durable Surface
Withstand extreme stress from heavy rolling loads and wheeled traffic.



Ergonomic Design
Add comfort underfoot, reducing foot and leg pain.



Superior Slip Resistance
Help to create safer spaces.



Supports Infection Control
Disinfect completely due to a dense, non-porous surface.



Cradle to Cradle Certified® Silver
Certification of whether a product is safe, circular and responsibly made.



Carbon Neutral Floors™
Third party verified carbon neutral throughout its entire life cycle as part of Interface's Carbon Neutral Floors program. Learn more at interface.com/carbonneutral



GREENGUARD Gold
Certified low VOC emissions.

Integrated system

nora and Interface cover every area of your building – all from a single source. Create harmonious, space-specific design with our system of soft and resilient floor coverings, including special floorings, stair treads and accessories.

Outstanding service

From design to post-installation, we have the experts to support your project at every step and can even be a valued resource for your organization's sustainability mission.

For additional information regarding usage in recommended applications, contact us or visit nora.com.

ORDER SAMPLES
Online at www.nora.com
Call 1.800.332.NORA
Email your sales rep or customer support specialist

BROWSE NORA.COM

- Design your floor with nora Room Designer
- Find technical and environmental documents
- Access BIM/Revit Files

Product warranty

We will be happy to supply specific test results on all nora systems, Inc. products.

nora® by Interface®

Product Warranty – Americas (Excerpt)

nora systems, Inc. (nora) warrants the following nora® brand products (collectively, the "Warranted nora Brand Flooring Products") as set forth below: norament® and noraplan® rubber flooring, norament rubber stairtread (excluding visually impaired strips), accessories (excluding visually impaired strips), nora® nTx™ O20 bond enhancer and adhesives, and the conductivity of its Electrostatic Dissipative ("ESD") flooring system (norament ed and noraplan ed flooring and adhesive).

This limited warranty and the applicable Installation Instructions and Maintenance Guidelines are subject to change at nora's discretion and without notice. Please contact nora or visit the nora.com website for the latest versions. For additional information regarding usage in recommended applications, please refer to www.nora.com or call 1-800-332-NORA. Warranty periods commence on the date of invoice of the product to the original end-use customer.