



norament arago

nora systems, Inc.
9 Northeastern Blvd.
Salem, NH 03079
T: 800.332.NORA
T: 603.894.1021
info-us@nora.com
www.nora.com

12/2023

nora[®]
by **Interface**[®]

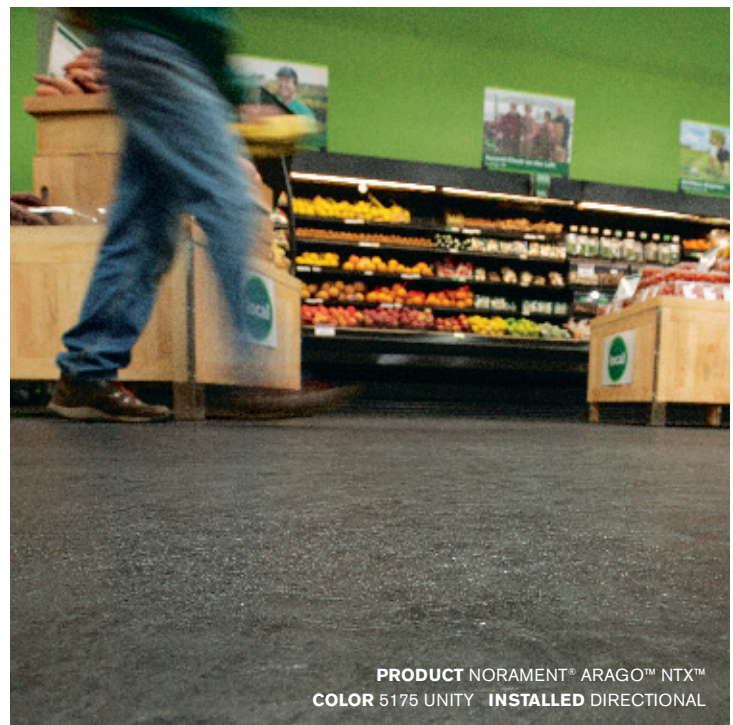


Create calm with the natural appeal of norament[®] arago[™]

From the geographic relief of mountain peaks to the exposed stonework of contemporary spaces, natural textures and colors bring harmony to their environment. norament arago captures this elemental appeal in a surface that supports your most heavily trafficked areas. Promote an atmosphere of calm in even the busiest hallways and public entryways.

Timeless texture, lasting performance

norament arago's layered, geologic forms balance the enduring appeal of natural stone with the durability of rubber flooring. Designed to meet modern performance demands, norament arago offers unrivaled sound absorption, slip resistance, underfoot comfort and ease of maintenance for a classic, long-lasting floor.



PRODUCT NORAMENT® ARAGO™ NTX™
COLOR 5175 UNITY INSTALLED DIRECTIONAL



PRODUCT NORAMENT ARAGO WITH BEVELED EDGES COLORS 5171 FORTITUDE, 5181 COMFORT INSTALLED DIRECTIONAL



Experience nature's elegant tones

norament arago offers a stonelike relief structure and a soothing, grey-toned palette. Explore rich, dark shades to soft neutrals. Each tile is unique. Marbling and fine granules blend seamlessly through the appearance of stone layers for a rubber flooring that's full of natural dimension and interest.

Discover the harmony of design and performance that goes beyond the surface with norament arago.


norament arago

Art. 3118  12
 1004 mm x 502 mm (~39.53 in x 19.76 in)

norament arago with beveled edges

Art. 3119  12
 998 mm x 497 mm (~39.23 in x 19.57 in)

norament arago nTx


Art. 3122  5
 1004 mm x 502 mm (~39.53 in x 19.76 in)

 ~3.5 mm

 ~3.5 mm

Product Construction	Homogeneous Rubber Tile
Class/ASTM F1344	Type 1B and Grade 2
Surface Type	Relief structure
Indoor Air Quality	GREENGUARD Gold
	CDPH 01350 Compliant
Full Life Cycle Carbon Emissions	Carbon Neutral Floors™
LEED v4	Contributes to multiple IEQ and MR credits

Variations in color and design, even within one production batch, define the product's aesthetic character.

 Available as norament® arago™ nTx™. Contact your sales representative for details and lead times.

Multiple installation options, including high moisture solutions.

View details and the full product specification at nora.com.

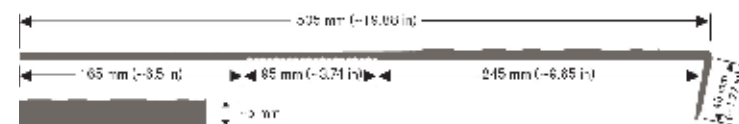
Installation Method



DIRECTIONAL

norament arago stairtreads

Art. 3170 - width 1285 mm (~50.59 in)
Art. 3171 - width 1614 mm (~63.54 in)
Art. 3172 - width 2004 mm (~78.89 in)



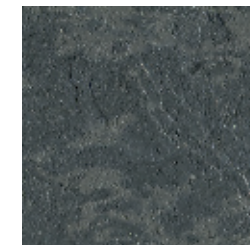
5170 STRENGTH



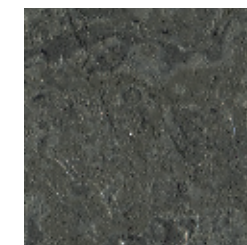
5171 FORTITUDE



5172 STAMINA



5173 FERVOR



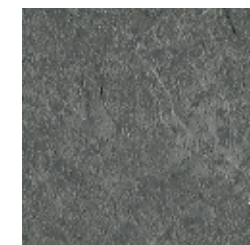
5174 HARMONY



5175 UNITY



5176 PEACE



5177 BALANCE



5178 CALM



5179 TRANQUIL



5180 SERENE



5181 COMFORT

Welding is not required unless specified. View weld recommendations at nora.com.

Why nora® rubber flooring?

Product Benefits



Reduced Maintenance

Little more than water needed - no finishes, coatings or harsh chemicals necessary.



Quiet Acoustical Performance

Attenuate noise pollution.



Ergonomic Design

Add comfort underfoot, reducing foot and leg pain.



Durable Surface

Withstand extreme stress from heavy rolling loads and wheeled traffic.



Superior Slip Resistance

Help to create safer spaces.



Supports Infection Control

Disinfect thoroughly due to a dense, non-porous surface.

Sustainability Verifications



Carbon Neutral Floors™

Third party verified carbon neutral throughout its entire life cycle as part of Interface's Carbon Neutral Floors program. Learn more at interface.com/carbonneutral.



Cradle to Cradle Certified® Silver

Certification of whether a product is safe, circular and responsibly made. Applies to nora 926 and 913 compound floor coverings and stair treads.



GREENGUARD Gold

All nora floor coverings & adhesives are certified for low VOC emissions.



Environmental Product Declaration (EPD)

A statement of product ingredients and environmental impacts over the entire life cycle of a product. A comprehensive life cycle assessment (LCA) is performed to ISO standards to develop an EPD, after which both the EPD and LCA must be third party verified. Applies to nora 926 and 913 compound floor coverings and stair treads, and ESD and acoustic floor coverings.



Health Product Declaration (HPD)

A transparency tool for evaluating whether a product supports Green Chemistry. As part of our work on Health and Materials, Interface continuously reduces the environmental and health impacts of our products through elimination of materials of concern. Applies to nora 926 and 913 compound floor coverings and stair treads, and ESD floor coverings.

Integrated System

nora and Interface cover every area of your building – all from a single source. Create harmonious, space-specific design with our system of soft and resilient floor coverings, including special floorings, stair treads and accessories.

Outstanding Service

From design to post-installation, we have the experts to support your project at every step and can even be a valued resource for your organization's sustainability mission.

nora.com

For additional information regarding usage in recommended applications, contact us or visit nora.com.

ORDER SAMPLES

Online at www.nora.com
Call 1.800.332.NORA
Email your sales rep or customer support specialist

BROWSE NORA.COM

- Find the right floor for your project with nora Flooring Finder
- Design your floor with the nora Room Designer
- Find technical and environmental documents



We have tried our very best to accurately represent product colors. However, due to the nature of printed materials, color of actual products may vary slightly. Please request a sample to see actual product color.

All product specifications reflect averages derived from product sample testing, are subject to normal manufacturing and testing tolerances and inherent pattern variances, and may be changed without notice. For more information about these and other important attributes of the product(s) described herein, including recycled content and limited warranty information, please see nora.com.

The nora brand and all other registered trademarks used in this document are registered to nora systems GmbH or its affiliates or subsidiaries. Other labels used here are trademarks of their respective owners.