



Printed on 50% post consumer waste (PCW) fiber manufactured using wind power.

Errors as well as misprints and changes reserved. No guarantee is given for the accuracy and completeness of the information. The product images in this document may differ from the original. This document is not a contractual offer and only serves to provide non-binding information.

The nora brand and all other registered trademarks used in this document are registered to nora systems GmbH or its affiliates or subsidiaries. Other labels used here are trademarks of their respective owners.

nora systems, Inc.
9 Northeastern Blvd.
Salem, NH 03079
T: 800.332.NORA
T: 603.894.1021
info-us@nora.com
www.nora.com

12/2023 Form Order #809945



nora stairwell solutions

nora[®]
by **Interface**[®]

Need tough, attractive floors that last?

nora rubber flooring has you *and your stairs covered.*

Whether you choose norament® stairtreads or pair nora® rubber flooring with nora® stair nosings, your steps will deliver the high performance, ease of maintenance and long-lasting good looks you expect from nora. And, they'll work with other nora flooring to create a seamless flow through your facility.

norament stairtreads

On angled, straight stairs, look to norament stairtreads. The all-in-one nosing, tread and riser makes installation simple and efficient. They are installed with nora® stepfix™ 240 double-sided tape—an immediate trafficking solution for an all-around fast turnover.

nora flooring with nora stair nosings

For other stairwells, including spiral staircases, choose a nora stair nosing from our range of accessories to pair with your preferred noraplan® or norament® flooring.

Contents

norament stairtreads

norament arago stairtreads	4
norament grano stairtreads	5
norament hammered stairtreads	8
norament round stairtreads	9
norament satura stairtreads	12
norament 920 stairtreads	13
Specifications	15

nora stair accessories

nora stair nosings	18
nora stairwell installation materials	19
nora visually impaired strips	20

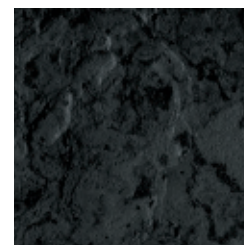
Why nora rubber flooring?	21
---------------------------	----





norament[®] arago[™] stairtreads

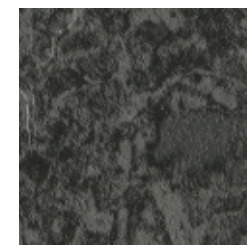
Flat, direction-oriented relief structure with fine grain design and modern marbling.



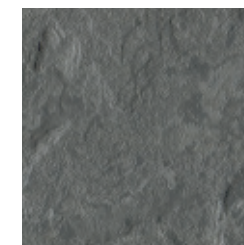
5171 FORTITUDE



5172 STAMINA



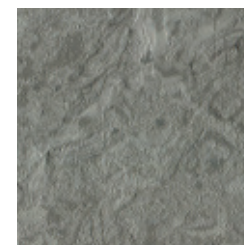
5175 UNITY



5177 BALANCE



5178 CALM



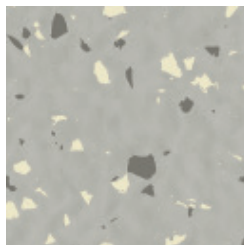
5179 TRANQUIL

norament[®] grano[™] stairtreads

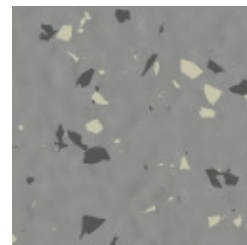
Rich, contrasting granular design with a hammered surface.



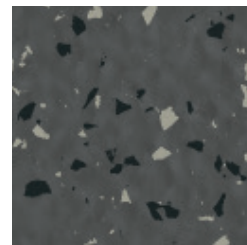
5301 WHITE FIR



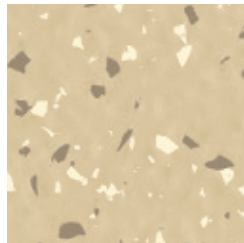
5302 ANGELICA ROOT



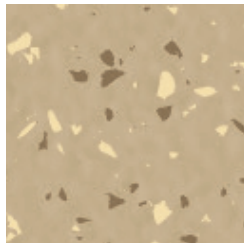
5303 FRANKINCENSE



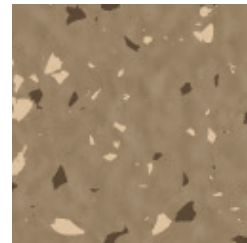
5304 BLACK PEPPER



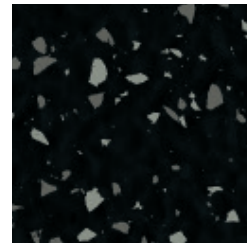
5313 MARJORAM



5314 HENNA



5315 CEDARWOOD



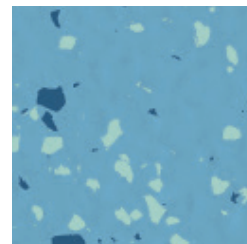
5308 MYRRH



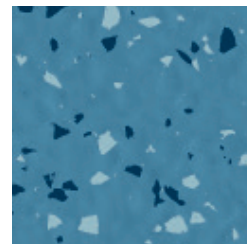
5329 BERGAMOT



5325 BALSAM

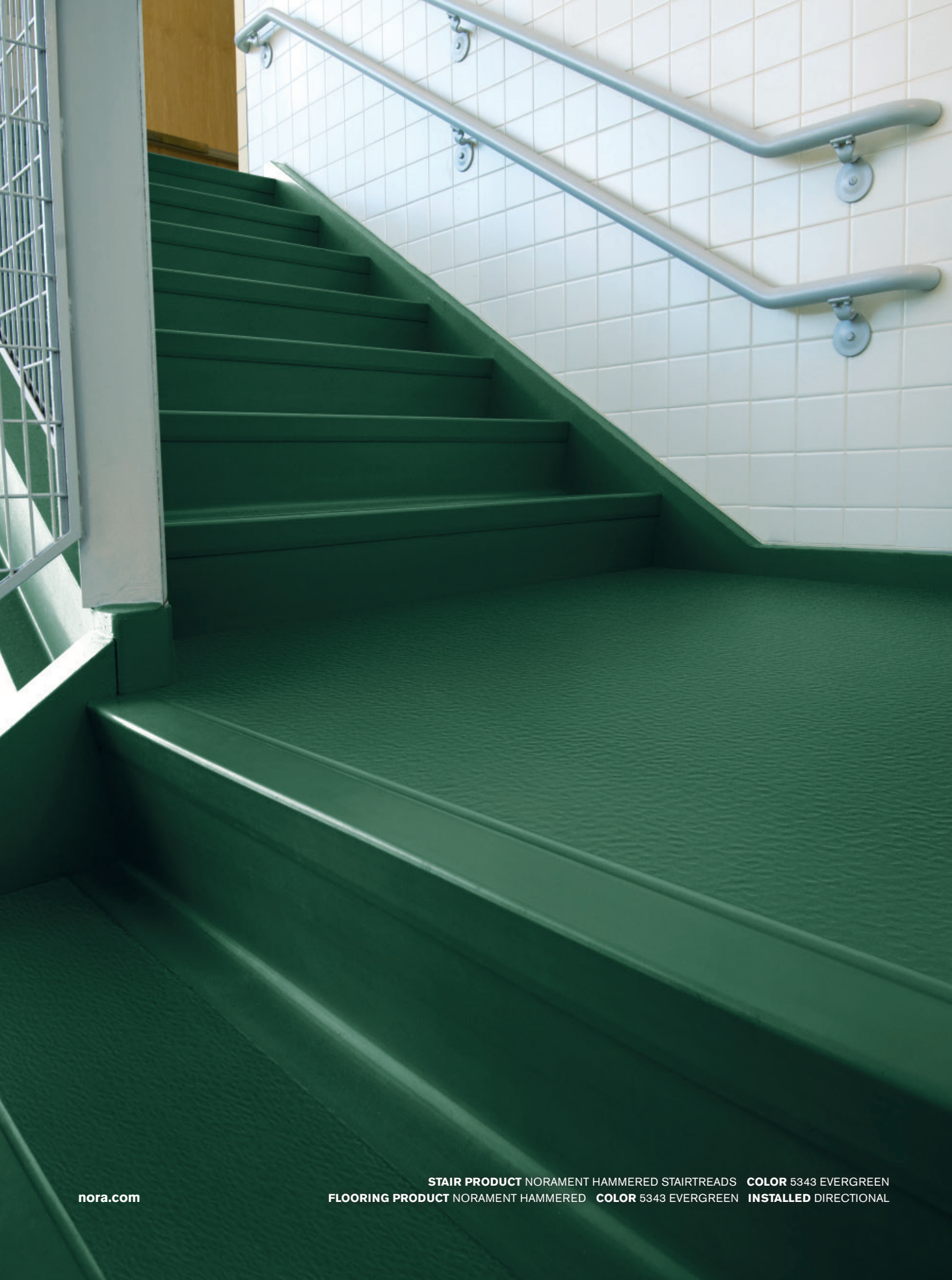


5317 AGAPANTHUS



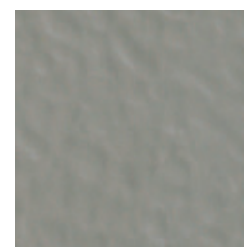
5318 BLUE TANSY



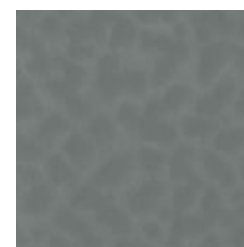


norament[®] hammered stairtreads

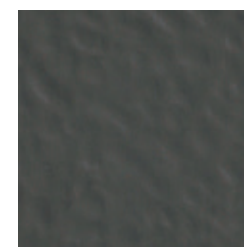
Monochrome with a hammered surface.



5336 RHINO



0884 DUST GREY



5337 ASH



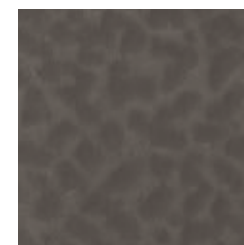
0702 BLACK



0007 ALUMINUM



0882 PLATINUM GREY



0749 STONE GREY



0716 SLATE GREY



5343 EVERGREEN



0319 SLATE BLUE



0733 STEEL BLUE

norament[®] round stairtreads

Monochrome with a classic round pastille surface.



5336 RHINO



0884 DUST GREY



5337 ASH



0702 BLACK



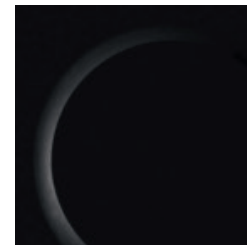
0007 ALUMINUM



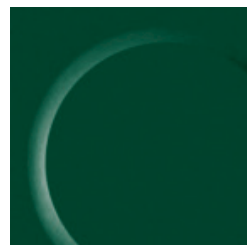
0882 PLATINUM GREY



0749 STONE GREY



0716 SLATE GREY



5343 EVERGREEN



0319 SLATE BLUE



0733 STEEL BLUE



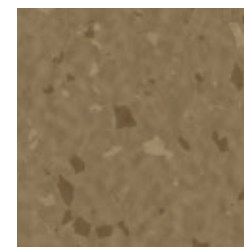


norament® satura™ stairtreads

Tone-on-tone granular design with a hammered surface.



5102 GRUS



5103 MERCURY



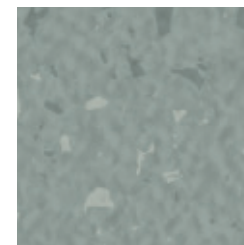
5107 CALLISTO



5108 INDUS



5110 ARA



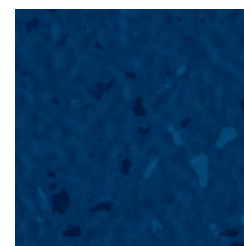
5114 CIRCINUS



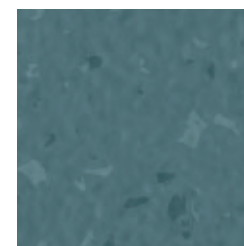
5115 HERCULES



5116 ARCTURUS



5121 HYDRA



5127 VELA

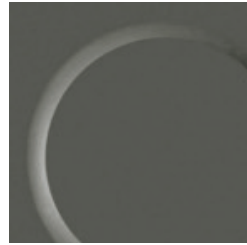
norament[®] 920 stairtreads

 (Class A Fire-Rated)

Monochrome with a classic round pastille surface for special fire protection requirements.



0884 DUST GREY



0749 STONE GREY

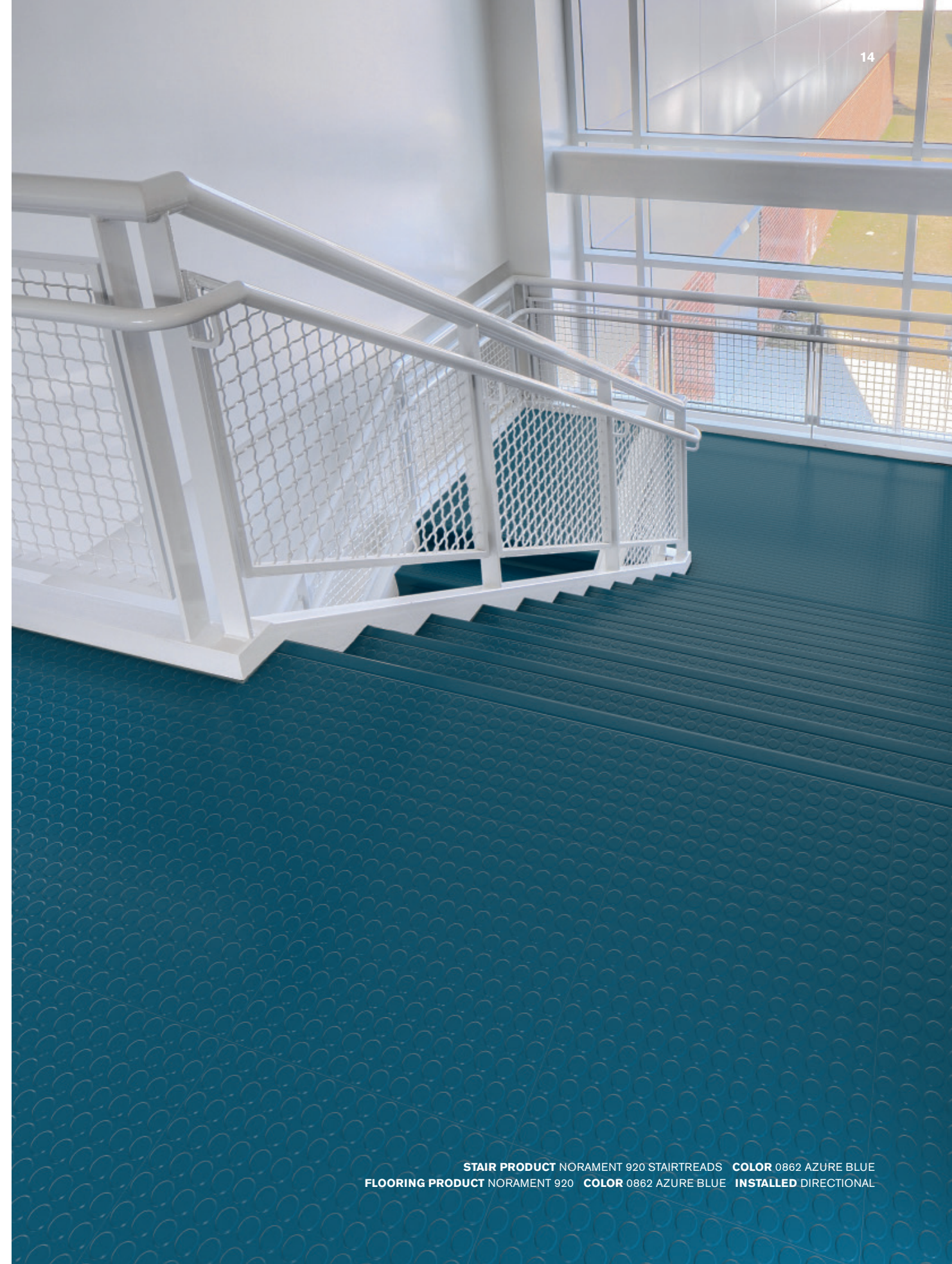


0702 BLACK



0862 AZURE BLUE


- Meets Class A (ASTM E84 Tunnel Test) with a flame spread rate of 15 and smoke development of 300
- CAN/ULC S102.2 Surface Burning Characteristics test results: FSR of 5 and SDC of 30 achieved
- Ideal flooring for emergency exits and stairways
- For use in egress areas above 75 feet according to International Building Code (IBC)
- Passes EN/ISO 26987 for oil & grease resistance

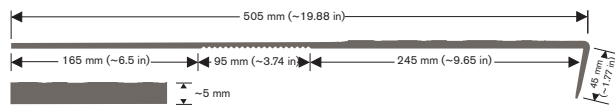


Specifications

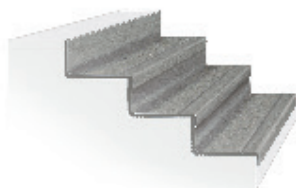
Our one-piece construction includes stair nosing, riser and tread and is built to fit straight steps with an angled edge. norament stairtreads are designed to withstand extremely heavy traffic while maintaining their good looks.

norament arago stairtreads

-  **Art. 3170** - width 1285 mm (~50.59 in)
- Art. 3171** - width 1614 mm (~63.54 in)
- Art. 3172** - width 2004 mm (~78.89 in)

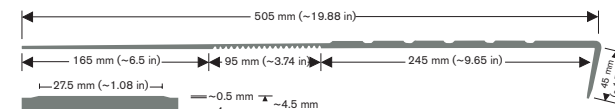


Product Construction	Homogeneous Rubber Stair Tread
Class/ASTM F2169	Type TS, Class 2, Group 1 and/or 2, Grade 2
Surface Type	Relief Structure and Smooth
Indoor Air Quality	GREENGUARD Gold CDPH 01350 Compliant
Full Life Cycle Carbon Emissions	Carbon Neutral Floors™
LEED v4	Contributes to multiple IEQ and MR credits



norament round stairtreads

-  **Art. 465** - width 1285 mm (~50.59 in)
- Art. 466** - width 1614 mm (~63.54 in)
- Art. 467** - width 2004 mm (~78.89 in)

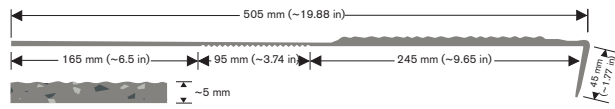


Product Construction	Homogeneous Rubber Stair Tread
Class/ASTM F2169	Type TS, Class 2, Group 1 and/or 2, Grade 2
Surface Type	Round Pastille and Smooth
Indoor Air Quality	GREENGUARD Gold CDPH 01350 Compliant
Full Life Cycle Carbon Emissions	Carbon Neutral Floors™
LEED v4	Contributes to multiple IEQ and MR credits



norament grano stairtreads

-  **Art. 479** - width 1285 mm (~50.59 in)
- Art. 468** - width 1614 mm (~63.54 in)
- Art. 469** - width 2004 mm (~78.89 in)

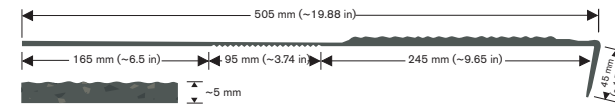


Product Construction	Homogeneous Rubber Stair Tread
Class/ASTM F2169	Type TS, Class 2, Group 1 and/or 2, Grade 2
Surface Type	Hammered and Smooth
Indoor Air Quality	GREENGUARD Gold CDPH 01350 Compliant
Full Life Cycle Carbon Emissions	Carbon Neutral Floors™
LEED v4	Contributes to multiple IEQ and MR credits

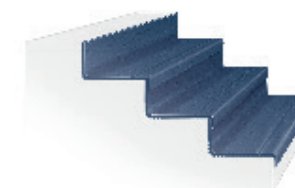


norament satira stairtreads


-  **Art. 479** - width 1285 mm (~50.59 in)
- Art. 468** - width 1614 mm (~63.54 in)
- Art. 469** - width 2004 mm (~78.89 in)

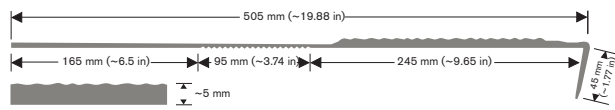


Product Construction	Homogeneous Rubber Stair Tread
Class/ASTM F2169	Type TS, Class 2, Group 1 and/or 2, Grade 2
Surface Type	Hammered and Smooth
Indoor Air Quality	GREENGUARD Gold CDPH 01350 Compliant
Full Life Cycle Carbon Emissions	Carbon Neutral Floors™
LEED v4	Contributes to multiple IEQ and MR credits

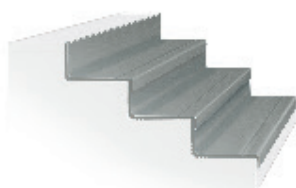


norament hammered stairtreads

-  **Art. 479** - width 1285 mm (~50.59 in)
- Art. 468** - width 1614 mm (~63.54 in)
- Art. 469** - width 2004 mm (~78.89 in)

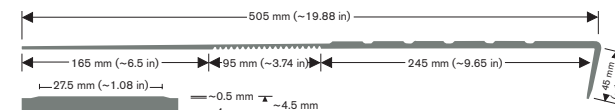


Product Construction	Homogeneous Rubber Stair Tread
Class/ASTM F2169	Type TS, Class 2, Group 1 and/or 2, Grade 2
Surface Type	Hammered and Smooth
Indoor Air Quality	GREENGUARD Gold CDPH 01350 Compliant
Full Life Cycle Carbon Emissions	Carbon Neutral Floors™
LEED v4	Contributes to multiple IEQ and MR credits

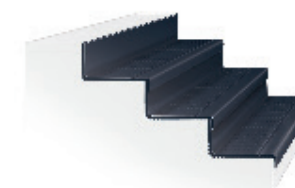


norament 920 stairtreads

-  **Art. 465** - width 1285 mm (~50.59 in)



Product Construction	Homogeneous Rubber Stair Tread
Class/ASTM F2169	Type TS, Class 2, Group 1 and/or 2, Grade 1
Surface Type	Round Pastille and Smooth
Indoor Air Quality	GREENGUARD Gold CDPH 01350 Compliant
Full Life Cycle Carbon Emissions	Carbon Neutral Floors™
LEED v4	Contributes to IEQ credits

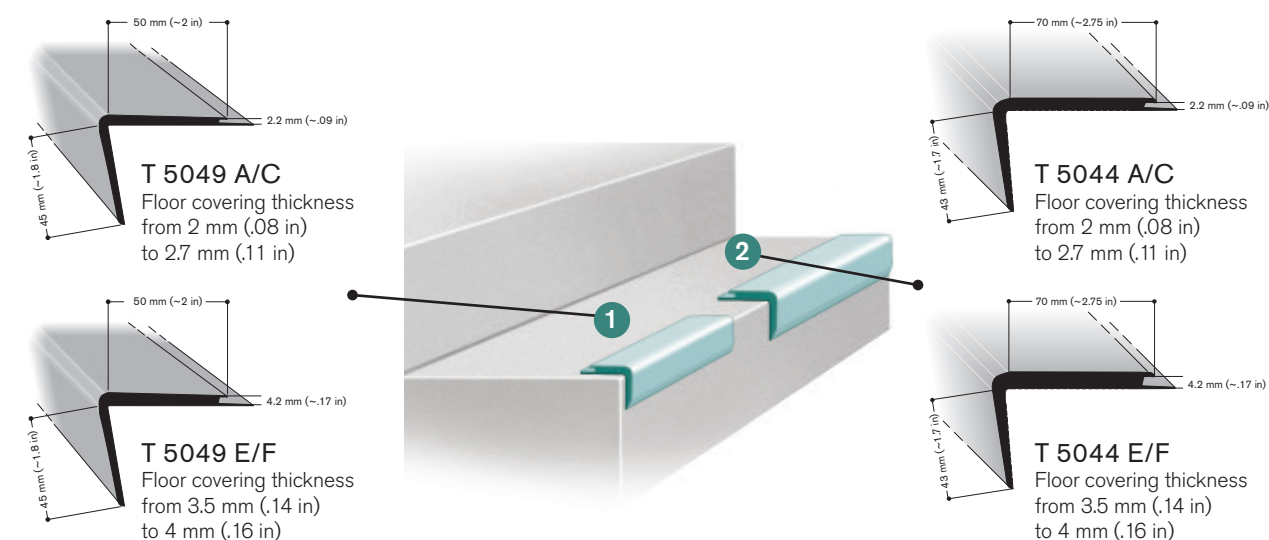


nora stair accessories

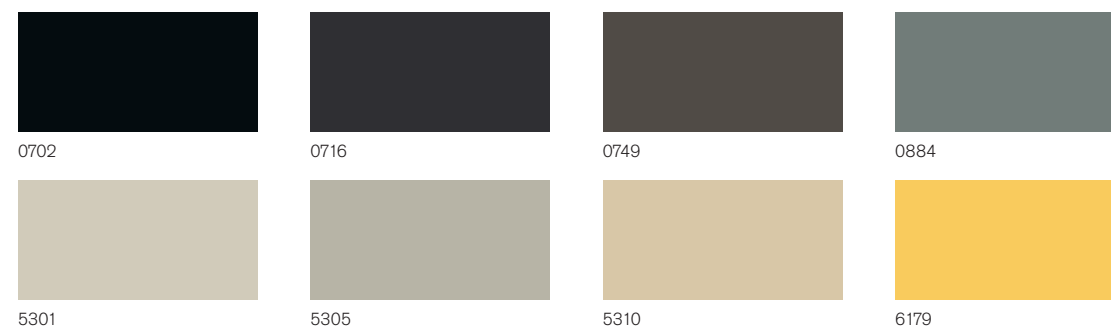
nora flooring with stair nosings

Bring the full repertoire of nora floor coverings to more types of stairs, including specialty stairs like spiral staircases, by pairing nora stair nosings with nora flooring.

nora stair nosings are designed for multiple flooring thicknesses and can be used on noraplan or norament floor coverings. Once the flooring is pre-cut to the dimension of an individual stair tread, the nora stair nosing insertion lip locks the flooring into place and protects the cut edge. And, nora stair nosings are both impact and shock resistant.



Standard colors:



nora stair nosing



Art. 805 – T 5049

Art. 802 – T 5044

Piece Length: 2.5 m (~8.2 ft)

For use on noraplan and norament floor coverings.

nora stair accessories

(continued)

nora stepfix 240

nora stepfix 240 is an innovative and cost-effective adhesive tape suitable for new builds and renovation projects. Specifically designed for norament stairtreads, nora stepfix 240 makes installation 3-5 times faster than conventional installation methods, and the process is odorless, clean, and easy.

You can dry-fit the tread right on the covered adhesive tape, and stairs can be walked on immediately after installation. And nora stepfix 240 is GREENGUARD Gold certified for low VOC emissions, helping to improve indoor air quality.



Art. 907

Dimension of rolls: 240 mm (~9.45 in) width x 50 m (~164 ft) length = 12 m² (~129 SF)

nora epoxy stair filler

A solvent-free, non-flammable, high-performance epoxy that sets to a hard, permanent bond. Use on stairs with greater than 1/4 inch radius or damaged edges to provide support under the stairtread nosing. Required for nora visually impaired strips.

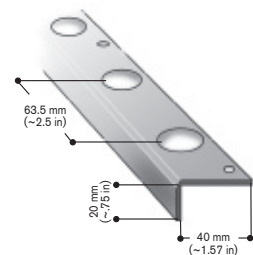


Art. 500875

- 13.5 oz dual cartridge applicator with special mixer application tip
- Two cartridge caulking gun required
- Coverage: ~40 LF with a .25 inch bead

nora metal repair stair angle

Prep rounded, wavy, damaged or bowed steps with the nora metal repair stair angle prior to installing nora stairwell products.



Art. 6637

Piece Length: 1 m (~39.37 in)

- Screws: middle of hole to middle of hole 63.5 mm (~2.5 in)

On stairs with round nosing, nora metal repair stair angle and/or nora epoxy stair filler must be used to fill the void.

nora visually impaired strips

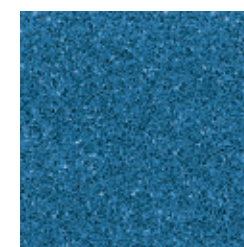
norament stairtreads and nora stair nosings can be equipped with a range of nora visually impaired strips to guide users or mark the edge of stairs in areas with safety or accessibility concerns. Inserts are offered in textured or smooth surfaces and high-contrast colors. A photoluminescent option is also available on request.



SAFETY YELLOW



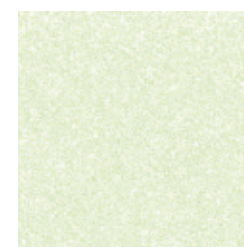
CORAL RED



BOARDWALK BLUE



BLACK



NITE GLOW



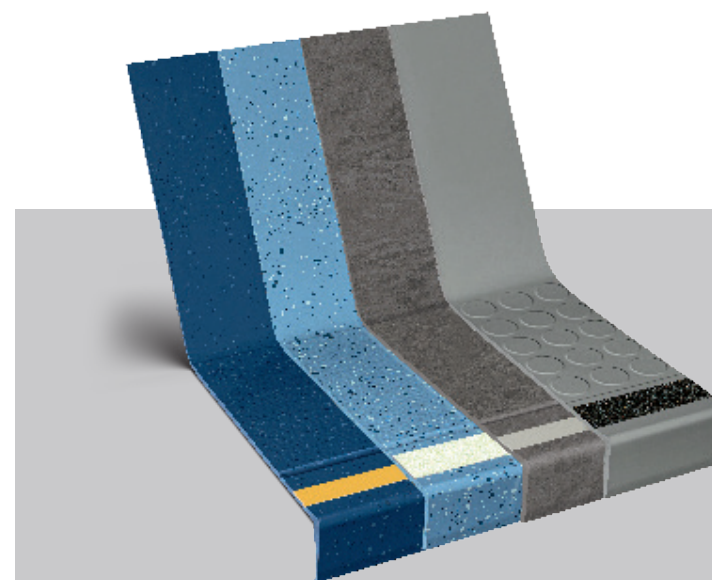
OCEAN GREY



0122



0895



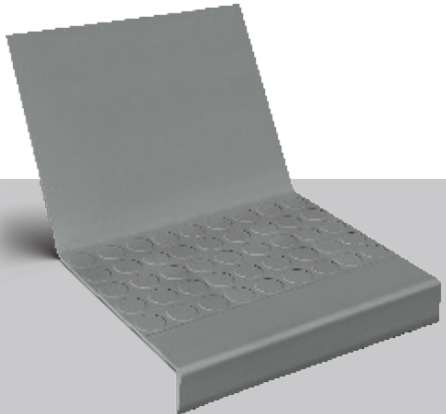
To ensure safety and performance, nora epoxy stair filler is used under the nosing of stairtreads with nora visually impaired strips at installation.



Why nora® rubber flooring?

nora Stairwell Solutions

Whether you choose norament stairtreads or pair nora floor coverings with stair nosings, rest easy knowing you have the high performance of nora rubber on your stairs.



norament stairtreads

In addition to the key benefits of all nora rubber flooring, norament stairtreads also offer:

- Installation efficiency of a pre-shaped stair nosing, riser and tread all-in-one piece and immediate trafficking with nora stepfix 240
- Pre-sanded backs
- Good for very heavy traffic
- High fire-retardant properties
- Visually impaired and photoluminescent strips for accessibility
- 15-year limited wear warranty*

STAIR PRODUCT NORAMENT GRANO STAIRTREADS
COLOR 5304 BLACK PEPPER **FLOORING PRODUCT** NORAMENT GRANO
COLOR 5304 BLACK PEPPER **INSTALLED** DIRECTIONAL

Why nora® rubber flooring?



Reduced Maintenance
 Little more than water needed - no finishes, coatings or harsh chemicals necessary.



Quiet Acoustical Performance
 Attenuate noise pollution.



Durable Surface
 Withstand extreme stress from heavy rolling loads and wheeled traffic.



Ergonomic Design
 Add comfort underfoot, reducing foot and leg pain.



Superior Slip Resistance
 Help to create safer spaces.



Supports Infection Control
 Disinfect completely due to a dense, non-porous surface.



Cradle to Cradle Certified® Silver**
 Certification of whether a product is safe, circular and responsibly made.



Carbon Neutral Floors™
 Third-party verified carbon neutral throughout its entire life cycle as part of Interface's Carbon Neutral Floors program. Learn more at interface.com/carbonneutral



GREENGUARD Gold
 Certified low VOC emissions.

**Cradle to Cradle not available for norament 920 stairtreads

*Limited warranty

We will be happy to supply specific test results on all nora systems, Inc. products.

nora® by Interface® Limited Warranty – Americas (Excerpt)
 nora systems, Inc. (nora) warrants the following nora® brand products (collectively, the "Warranted nora Brand Flooring Products") as set forth below: norament® and noraplan® rubber flooring, norament rubber stairtread (excluding visually impaired strips), accessories (excluding visually impaired strips), nora® nTx™ 020 bond enhancer and adhesives, and the conductivity of its Electrostatic Dissipative ("ESD") flooring system (norament ed and noraplan ed flooring and adhesive).

This limited warranty and the applicable Installation Instructions and Maintenance Guidelines are subject to change at nora's discretion and without notice. Please contact nora or visit the nora.com website for the latest versions. For additional information regarding usage in recommended applications, please refer to www.nora.com or call 1-800-332-NORA. Warranty periods commence on the date of invoice of the product to the original end-use customer.

Integrated system

nora and Interface cover every area of your building – all from a single source. Create harmonious, space-specific design with our system of soft and resilient floor coverings, including special floorings, stairtreads and accessories.

Outstanding service

From design to post-installation, we have the experts to support your project at every step and can even be a valued resource for your organization's sustainability mission.

For additional information regarding usage in recommended applications, contact us or visit nora.com.

ORDER SAMPLES
 Online at www.nora.com
 Call 1.800.332.NORA
 Email your sales rep or customer support specialist

BROWSE NORA.COM

- Design your floor with nora Room Designer
- Find technical and environmental documents
- Access BIM/Revit Files