

Studio FOLIO



Healthcare Comprehensive I

**Interface**<sup>®</sup>

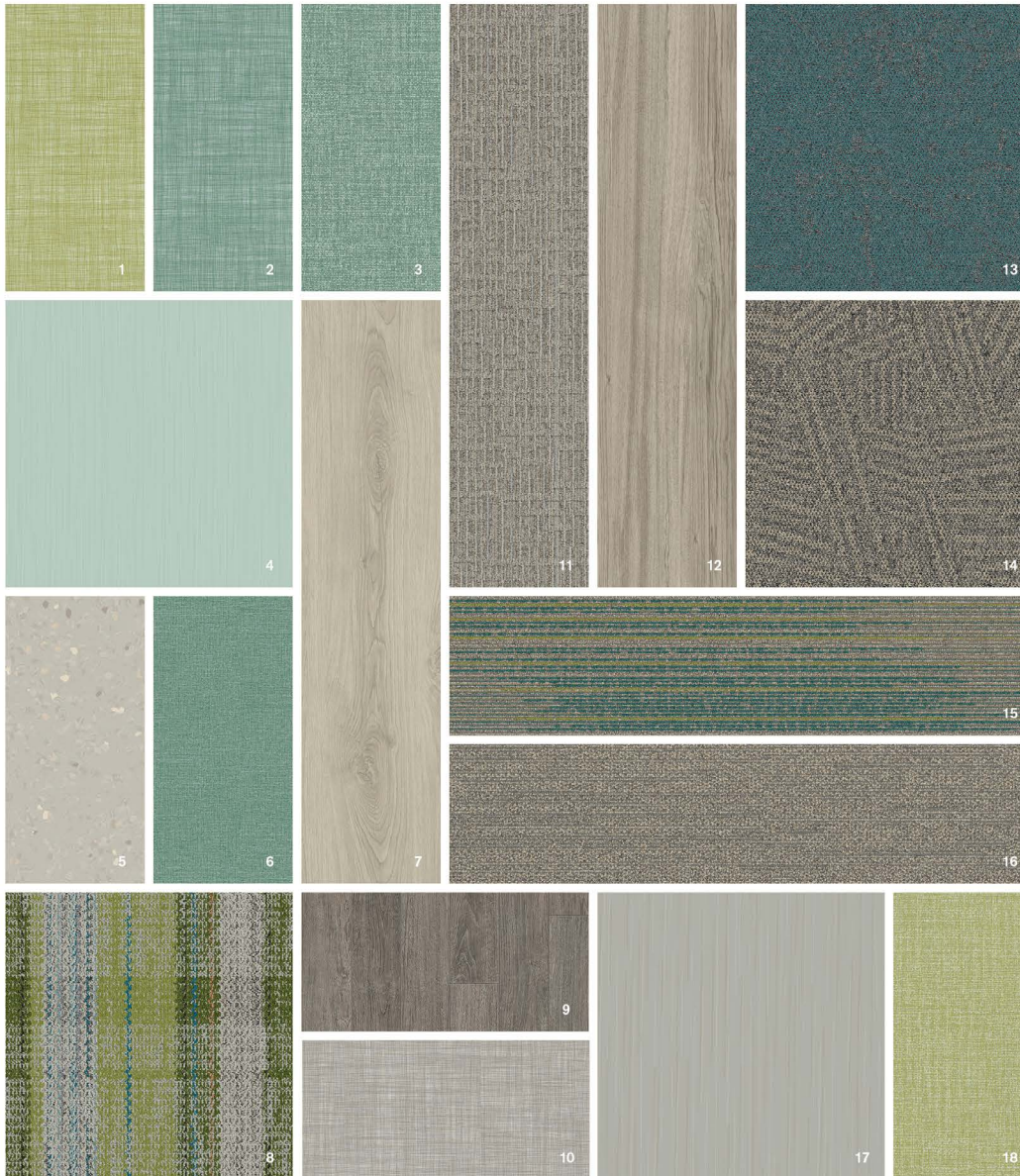
FOLIO: This FOLIO from Interface Design Studio illustrates how our flooring system—including nora® rubber, LVT, carpet tile, and vinyl sheet--can support the demands of key healthcare spaces in visually interesting ways. Meeting the functional needs of key industry standards, these aspirational designs will carry well into the future.

Whether you're in the early planning phase of a new project or looking for design support in the middle of a quick renovation, the Interface Design Studio is here to help with our fully complementary solution. All it takes is a conversation with your Interface or nora rep to get started.

NORAPLAN LINEE & VINYL SHEET

# Product Launch Palette | Celery & Sage

Interface®



- 1) Crossed: A02008 Celery
- 2) Crossed: A02007 Sage
- 3) Looped: A01007 Sage
- 4) noraplan linee: 7307 Jadeite
- 5) noraplan environcare: 7031 Baseball Game
- 6) Meshed: A03007 Sage
- 7) Natural Woodgrains: A00208 Sand Dune
- 8) **FLOR** Be Cool: 105194 Kiwi
- 9) Continual Woodgrains: A04002 Sliver Oak
- 10) Crossed: A02002 Taupe
- 11) Brownstone: 105867 Upper East
- 12) Natural Woodgrains: A00207 Washed Wheat
- 13) Ice Breaker: 106194 Larimar
- 14) Open Air 412: 106989 Natural
- 15) Ground Waves Verse: 104907 Gull Colors
- 16) Harmonize: 104047 Gull
- 17) noraplan linee: 7301 Fossil
- 18) Looped: A01008 Celery

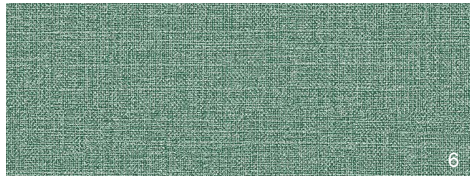
● Carpet ● LVT ● Vinyl Sheet ● nora® Rubber



9



9, 6, 17



6



17



12

15



17, 6

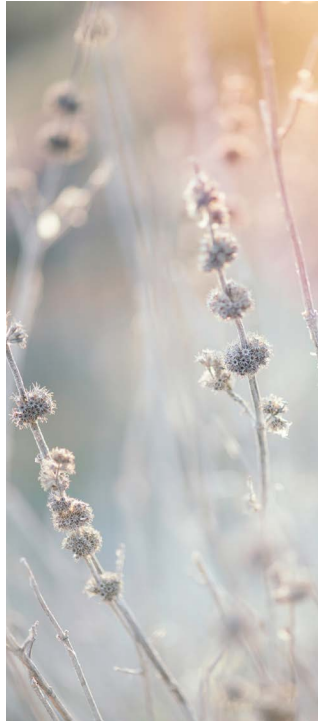


12, 16, 15

6) VS MESHED: 103007 SAGE 9) CONTINUAL WOODGRAINS: A04002 SILVER OAK 12) LVT NATURAL WOODGRAINS: A00207 WASHED WHEAT 15) GROUND WAVES VERSE: 104907 GULL COLORS 16) HARMONIZE: 104047 GULL 17) RUBBER NORAPLAN LINEE: 7301 FOSSIL



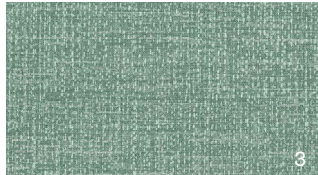
4, 9



3, 4, 5



14



3



9



4



6, 3

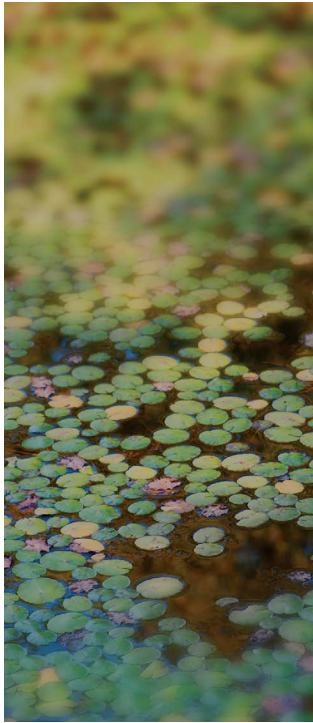


12, 14

3) VS LOOPED: A01007 SAGE 4) RUBBER NORAPLAN LINEE: 7307 JADEITE 5) NORAPLAN ENVIRONCARE: 7031 BASEBALL GAME 6) VS MESHED: 103007 SAGE 9) CONTINUAL WOODGRAINS: A04002 SILVER OAK 12) LVT NATURAL WOODGRAINS: A00207 WASHED WHEAT 14) OPEN AIR 412: 106989 NATURAL



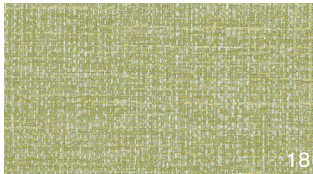
2, 1



1, 17



8



18



7

2



18, 17, 6



7, 13, 8

1) VS CROSSED: A02008 CELERY 2) VS CROSSED: A02007 SAGE 6) VS MESHED: 103007 SAGE 7) LVT NATURAL WOODGRAINS: A00208 SAND DUNE 8) FLOR BE COOL: 105194 KIWI 13) ICE BREAKER: 106194 LARIMAR 17) RUBBER NORAPLAN LINEE: 7301 FOSSIL 18) VS LOOPED: A01008 CELERY



1



10, 1, 5



5



1



11

10



5, 10



7, 11

1) VS CROSSED: A02008 CELERY 5) RUBBER NORAPLAN ENVIRONCARE: 7031 BASEBALL GAME 7) LVT NATURAL WOODGRAINS: A00208 SAND DUNE 10) VS CROSSED: A02002 TAUPE 11) BROWNSTONE: 105867 UPPER EAST

